

# MHT #02

## Rough Road Postings with Speed Reduction

\*\* All Traffic Control Devices to  
Conform to M.U.T.C.D.

Subject To Field Adjustments.

### Summary of Devices

- 2 - Road Work Ahead
- 2 - Speed Limit 20 MPH
- 2 - Rough Road
- 4 - Bump
- 2 - Keep Right
- 50 - Upright Delineator

### General Notes:

- Workers shall not cross live lanes of traffic.
- On site adjustment may take place by the TCS.
- These sign postings shall be in place during off hours when road is opened to traffic.
- Existing 30 MPH speed limit signs within the posted project limits shall be covered.

#### Formulas for Taper Length

Speed	Formula
40 mph or less	$L = \text{Lane Width} \times \text{Speed}^2 / 60$
45 mph or greater	$L = \text{Lane Width} \times \text{Speed}$

Road Type	Distance between Signs		
	A	B	C
Urban (Low Speed)	100	100	100
Urban (High Speed)	350	350	350
Rural	500	500	500
Expressway / Freeway	1000	1500	2640



#### LEGEND:

- = 48" WARNING SIGN
  - = CHANNELIZER
  - = BARRICADE
  - = WORK ZONE
- NOT DRAWN TO SCALE

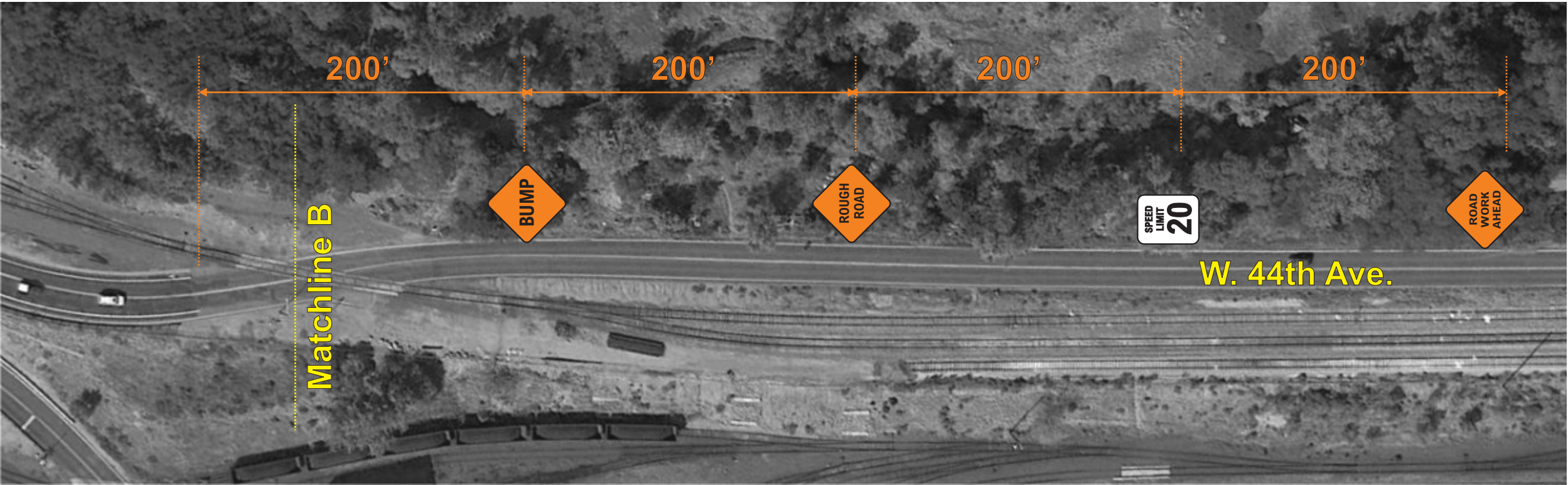


6260 Downing St.  
Denver, CO 80216  
P: 303.298.8407

GOLDEN		Revisions		
Location		Revision #	Date	Comments
10th St. & Vasquez St. To W. 44th Ave. & Easley Rd.				
Contractor	Contact			
Martin Marietta Materials	Bill Oetken			
Traffic Control Contractor	Prepared By			
RoadSafe Traffic Systems	Glenn Hines			
Date	Sheet Number			
09/13/2016	1 of 3			





LEGEND:

- ◆ = 48" WARNING SIGN
  - = CHANNELIZER
  - /// = BARRICADE
  - ▨ = WORK ZONE
- NOT DRAWN TO SCALE





Upright Delineator  
Device Spacing:  
40' Typical

- LEGEND:
-  = 48" WARNING SIGN
  -  = CHANNELIZER
  -  = BARRICADE
  -  = WORK ZONE
- NOT DRAWN TO SCALE

