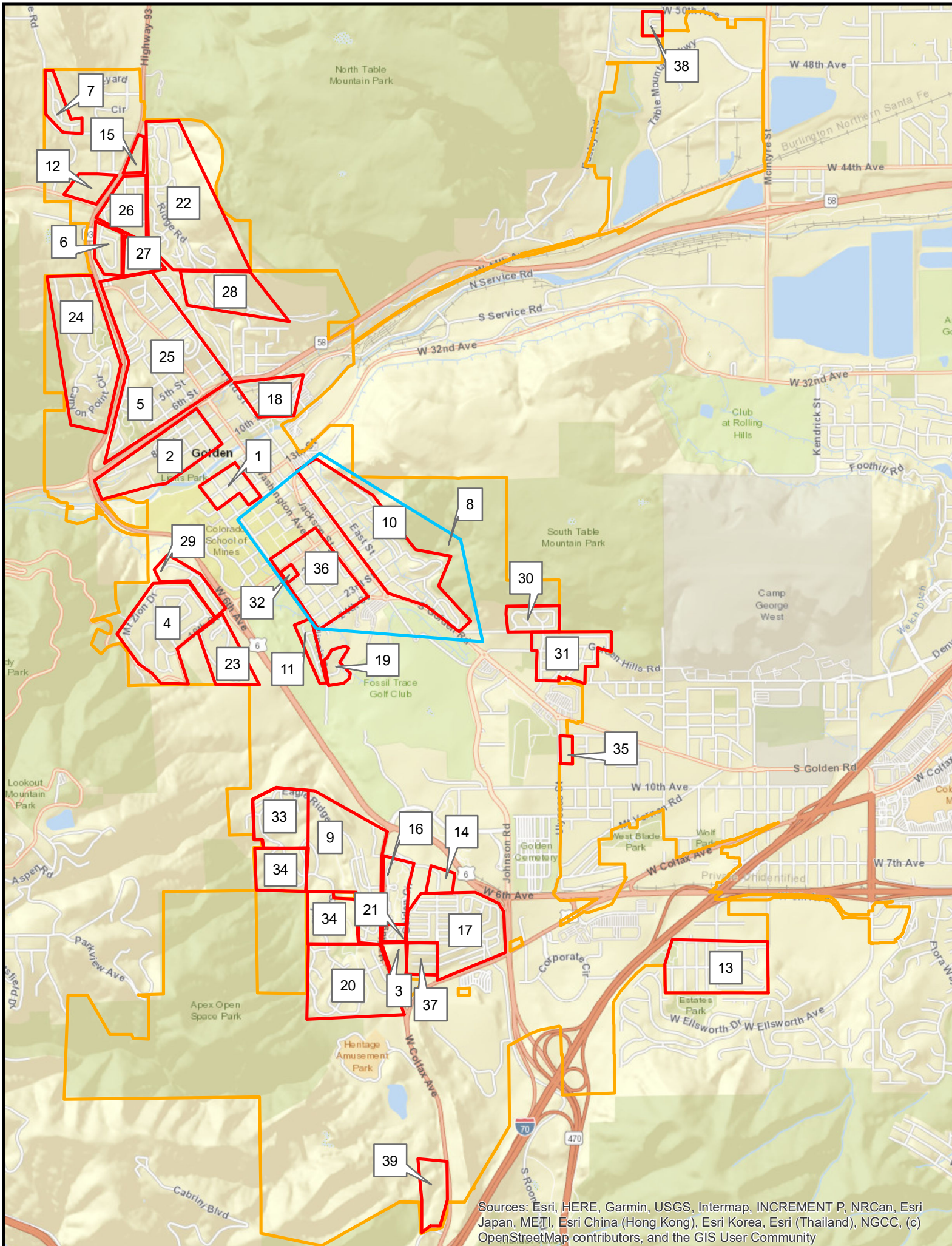


## **Golden Neighborhoods**

1. 12<sup>th</sup> Street Historic District – 12<sup>th</sup> Street area near School Mines
2. 8<sup>th</sup> and 9<sup>th</sup> Street Neighborhood – Area north of City Hall to Rte 58
3. Bachman Farm – North of 4<sup>th</sup> Ave and east of Heritage.
4. Beverly Heights – North of 19<sup>th</sup>, East of Lookout Mtn Rd
5. Canyon Point – East of 93 and south of Iowa near Mitchell Elementary
6. Canyon View (2)– East of 93 across from Golden Gate Canyon Rd (Joseph Circle)
7. Canyon View (3) – Richmond Home project on the northwest corner of Golden – Pine Ridge West
8. Central Neighborhood – Area near Ford between 15<sup>th</sup> and 24<sup>th</sup> (includes Items 10, 11, 20, 33 & 37)
9. Eagle Ridge – West of Heritage Rd near Eagle Ridge Circle (Lakota Hills is south part of neighborhood)
10. East Street - Subset of Central Neighborhood east of Ford Rd and South Golden Rd betw/ 15<sup>th</sup> & Rimrock
11. Fossil Trace – Two neighborhoods abutting Golf Course off Illinois and part of Central.
12. Golden Gate Canyon Rd – West of 93. Senior condos and senior care (Golden Living and Epoch).
13. Golden Heights/Golden Hills/Golden Overlook – S. of I-70 and 6 Ave & west of Jeffco Fairgrds
14. Golden Outlook – Apts along 6<sup>th</sup> west of the pedestrian bridge from Jeffco HQ – adjoins Golden Ridge.
15. Golden Pond – East of 93, South of Pine Ridge and west of N. Ford St. Senior/Assisted Living.
16. Golden Ridge – Condos and apts east of Heritage Road in the vicinity of the Eagleridge Circle.
17. Golden Terrace – Three adjacent mobile home parks north of Colfax. Owned by Equity Lifestyles/Sam Zell
18. Goosetown – East of Ford Rd between Clear Creek and Rte 58.
19. Harmony Village – South of Illinois past 24<sup>th</sup> and subset of Central
20. Heritage Dells – Heritage Rd and Kimball area. Approved as a PUD in the 1970's, 1st sold in 1979.
21. Heritage Village Town Homes – North of 4<sup>th</sup> Ave at Heritage Rd.
22. Mesa Meadows – East of 93 & Ford up to Pine Ridge on N. Table Mtn area built on former Foss Fam.
23. Mines Park – Student Married Housing east of 19<sup>th</sup> Street and north of 6<sup>th</sup> Ave
24. Mountain Ridge – West side of 93 on both sides of Iowa. Largest HOA. (one of the Canyon Point tracts.)
25. North Neighborhood – South of Mesa Meadows and west of North Ford
26. North 40 – East of 93 and north of Canyon View across from Golden Gate Canyon Road
27. North Golden Edge – West of North Ford and north of Alaska
28. North Table Mountain – East of north East Street – Includes Peery Parkway
29. Parfet Estates – East of and below Beverly Heights, west of 6<sup>th</sup> Ave and north of 19<sup>th</sup> St.
30. Rimrock – Area east of South Golden Road at the end of Rimrock Drive.
31. South Ridge – Area east/above King Soopers adjacent to the south side of Rimrock Neighborhood.
32. Stone Arch Villas – Southeast corner at 19<sup>th</sup> and Illinois – part of Central.
33. Stonebridge – West of Eagle Ridge off Heritage (approved at a PUD late 1990's, 1<sup>st</sup> homes 2000.)
34. Tripp Ranch – West of Eagle Ridge and south of Stonebridge (37 homes – 1<sup>st</sup> home 1994.)
35. Ulysses & 12<sup>th</sup> Ave – Two townhome projects on the east side of Ulysses near the King Soopers Circle
36. Welch Addition – East of Illinois and south of Jackson – subset of Central
37. West 3<sup>rd</sup> Ave at Zeta Rd – adjacent / south of Golden Terrace Mobile Home Park.
38. Wild Plum – Area off 50<sup>th</sup> & Easley Road – far eastern Golden north of Coors Technology Business Center

## **Commercial Areas**

- Colfax Commercial – Area east and west of 6<sup>th</sup> – Car dealerships, Violet St triangle
- Coors Technology Park – East Golden off McIntyre St
- Corporate Center – Commercial area west of Interplaza, south of Colfax, and east of C-470 Ramp
- Downtown
- East Commercial Area – East of Indiana & north of 6<sup>th</sup> Ave; Residence Inn, Confluence Companies et al.
- 39. Gateway – Area at the end of Colfax/I-70 – Harley Davidson and Origin Hotel
- Golden Heights Commercial – west of Fairgrounds
- Heritage & 6<sup>th</sup> – Treks et al
- Interplaza – Kohl's and Home Depot et al – south of Colfax and west of 6<sup>th</sup>.
- Jackson Commercial – Safeway et al
- North Golden/Pine Ridge – Spyderco et al
- South Golden Road – King Soopers to Natural Grocers near Golden High School
- Canyon Point Commercial – Washington and 93 – Cannonball, Starbucks, et al



Sources: Esri, HERE, Garmin, USGS, Intermap, INCREMENT P, NRCan, Esri Japan, METI, Esri China (Hong Kong), Esri Korea, Esri (Thailand), NGCC, (c) OpenStreetMap contributors, and the GIS User Community