

Existing conditions, view to the north near sports field.

Sketch of proposed channel after improvements. →

This is the south end upstream part of the channel improvements by Golden High School. There is more space here for widening the channel and there will be fewer boulder walls than the channel north of here. Widening the channel and the new 10 ft drop structure construction will require removal of most larger trees particularly near 24th Street. The new channel bottom will be natural landscape like riparian corridor with some new trees mostly on the area above the walls.



Concept Plan

SOUTH REACH OF PROJECT AREA South of 24th Street

FM 1 14 14
1 of 3



Urban Drainage and Flood Control District



LANDSCAPE CONCEPT
West Fork Kenney's Run
Channel Improvements



FRANK MILTENBERGER
LANDSCAPE ARCHITECT

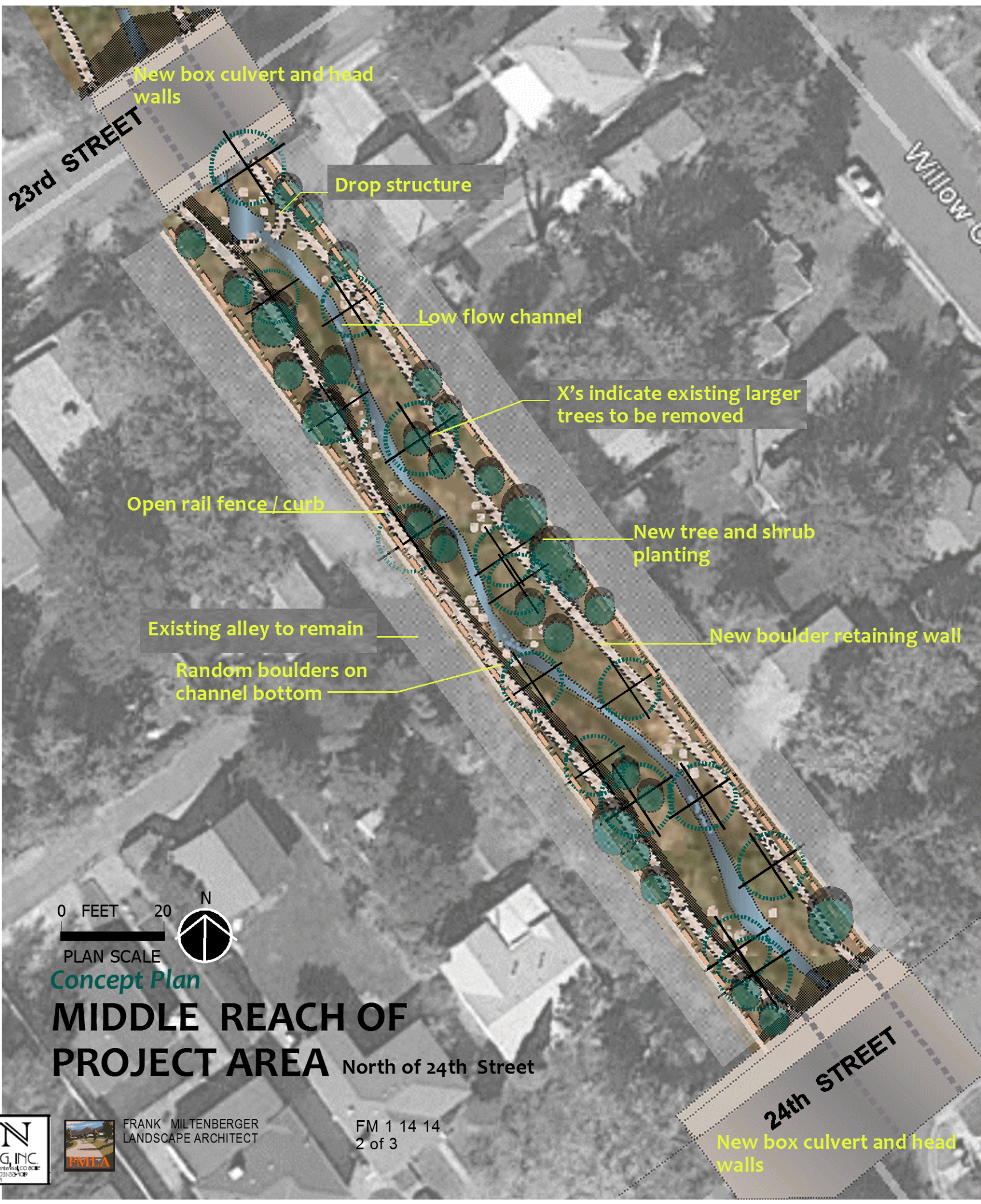


Existing conditions, view ↑
to the southeast from
23rd Street.

↓ Sketch of proposed
channel



The new channel improvements will require removal of most of the existing larger trees. New boulder channel walls will added on both sides with curvilinear low flow channel. New tree and shrub planting will be included where space allows and where they don't impede storm water flows.



Urban Drainage
and
Flood Control
District



LANDSCAPE CONCEPT
West Fork Kenney's Run
Channel Improvements




FRANK MILTENBERGER
LANDSCAPE ARCHITECT


FM 1 14 14
2 of 3

New box culvert and head
walls



Existing conditions, view  to the northwest.

This is the north end of the channel improvements. Widening the channel will require removal of some larger trees. A new boulder wall will be added on the southwest side. The new channel bottom will be natural landscape like riparian corridor but with fewer large trees.

 Sketch of proposed channel after vegetation is established



**Urban Drainage
and
Flood Control
District**



**LANDSCAPE CONCEPT
West Fork Kenney's Run
Channel Improvements**



FRANK MILTENBERGER
LANDSCAPE ARCHITECT

Concept Plan

**NORTH REACH OF
PROJECT AREA**

North of 23rd Street