

GOLDEN GATEWAY APARTMENTS

LOTS 12 THROUGH 19 INCLUSIVE IN BLOCK 19 OF WELCH'S ADDITION TO GOLDEN,
BEING PART OF SECTION 34, TOWNSHIP 3 NORTH, RANGE 70 WEST OF THE 3RD P.M.,
ALL IN THE CITY OF GOLDEN, COUNTY OF JEFFERSON, STATE OF COLORADO.

PROJECT TEAM

OWNER
EVERGREEN REAL ESTATE GROUP
DAVID BLOCK
566 WEST LAKE STREET
SUITE 400
CHICAGO, ILLINOIS 60661
(312) 382-3259

ARCHITECT
EJ ARCHITECTURE, PLLC
ELIZABETH JOHNSON
735 S XENON COURT
SUITE 200
LAKEWOOD, COLORADO 80228
(720) 583-1650

CIVIL ENGINEER
BASELINE ENGINEERING, PLANNING, & SURVEYING
NOAH NEMMERS
1950 FORD STREET
GOLDEN, COLORADO 80401
(303) 940-9959

LANDSCAPE ARCHITECT
LIMEGREEN DESIGN
ANNE DESJARDINS
900 E. LOUISIANA AVENUE
SUITE 289
DENVER, COLORADO 80201
(303) 733-7558

PHOTOMETRICS
GIVEN & ASSOCIATES, INC.
KEVIN TOPP
735 S XENON COURT
SUITE 201
LAKEWOOD, COLORADO 80228
(303) 716-8083

SITE DATA:

ZONING: CMU-NC
PROPOSED USE: MULTI-UNIT HOUSING

1	TOTAL AREA OF PROPERTY:	28,152 SQ. FT.	
2	BUILDING COVERAGE:	26,546 SQ. FT.	
3	PROPOSED NUMBER OF UNITS: (ONE BDRM/UNIT) (TWO BDRM/UNIT) (THREE BDREM/UNIT)	44 UNITS 14 UNITS 26 UNITS 4 UNITS	
4	PARKING AND DRIVES: (14) ONE BDRM/UNIT (X1) (26) TWO BDRM/UNIT (X1.5) (4) THREE BDRM/UNIT (X2) COMBINED NUMBER OF PARKING	14 REQUIRED 39 REQUIRED 8 REQUIRED 61 (3 ACCESSIBLE) REQUIRED	14 PROPOSED 39 PROPOSED 8 PROPOSED 63 (3 ACCESSIBLE) PROPOSED
5	BIKE PARKING:	REQUIRED: 14	PROPOSED: 45



VICINITY MAP
N.T.S.

OWNERSHIP CERTIFICATE:

APPROVED BY THE CITY OF GOLDEN PLANNING COMMISSION

THIS _____ DAY OF _____, 2016

BY _____

CITY OF GOLDEN PLANNING COMMISSION:

APPROVED BY THE CITY OF GOLDEN PLANNING COMMISSION

THIS _____ DAY OF _____, 2016

CHAIRMAN _____

SECRETARY _____

NOTARIAL:

APPROVED BY THE CITY OF GOLDEN PLANNING COMMISSION

STATE OF _____)

COUNTY OF _____)

THE FOREGOING SIGNATURE WAS ACKNOWLEDGED BEFORE ME

THIS _____ DAY OF _____, 2016

SHEET INDEX:

A0 PROJECT INFORMATION
A1 SITE PLAN
C1 EXISTING CONDITIONS/DEMO
C2 CIVIL SITE PLAN
C3 GRADING PLAN
C4 UTILITY PLAN
L1 LANDSCAPE PLAN
A2 ELEVATIONS
A3 ELEVATIONS
E1 SITE LIGHTING PLAN
E2 SITE LGIHTING DETAILS



Copyright - This document is an instrument of services, and as such remains the property of the architect. Permission for use of this document is limited and can be extended only by agreement with EJ Architecture PLLC.

GOLDEN GATEWAY
APARTMENTS
GOLDEN, COLORADO

DRW AA

CHK EJ, SW

REVISIONS

REVISION SCHEDULE		
REVISION NUMBER	REVISION DESCRIPTION	REVISION DATE

ISSUE RECORD

NO.	DESCRIPTION	DATE
1	CITY SUBMITTAL 1	8/3/2016
2	CITY SUBMITTAL 2	8/25/2016
3		
4		
5		
6		

SHEET CONTENTS:

COVER SHEET

NOT FOR CONSTRUCTION

PROJ. NUMBER:

DATE:

DRAWING NUMBER:

A0

GOLDEN GATEWAY
APARTMENTS
GOLDEN, COLORADO

DRW AA
CHK EJ, SW

REVISIONS

REVISION SCHEDULE		
REVISION NUMBER	REVISION DESCRIPTION	REVISION DATE

ISSUE RECORD

NO.	DESCRIPTION	DATE
1	CITY SUBMITTAL 1	8/3/2016
2	CITY SUBMITTAL 2	8/25/2016
3		
4		
5		
6		

SHEET CONTENTS:

SITE PLAN

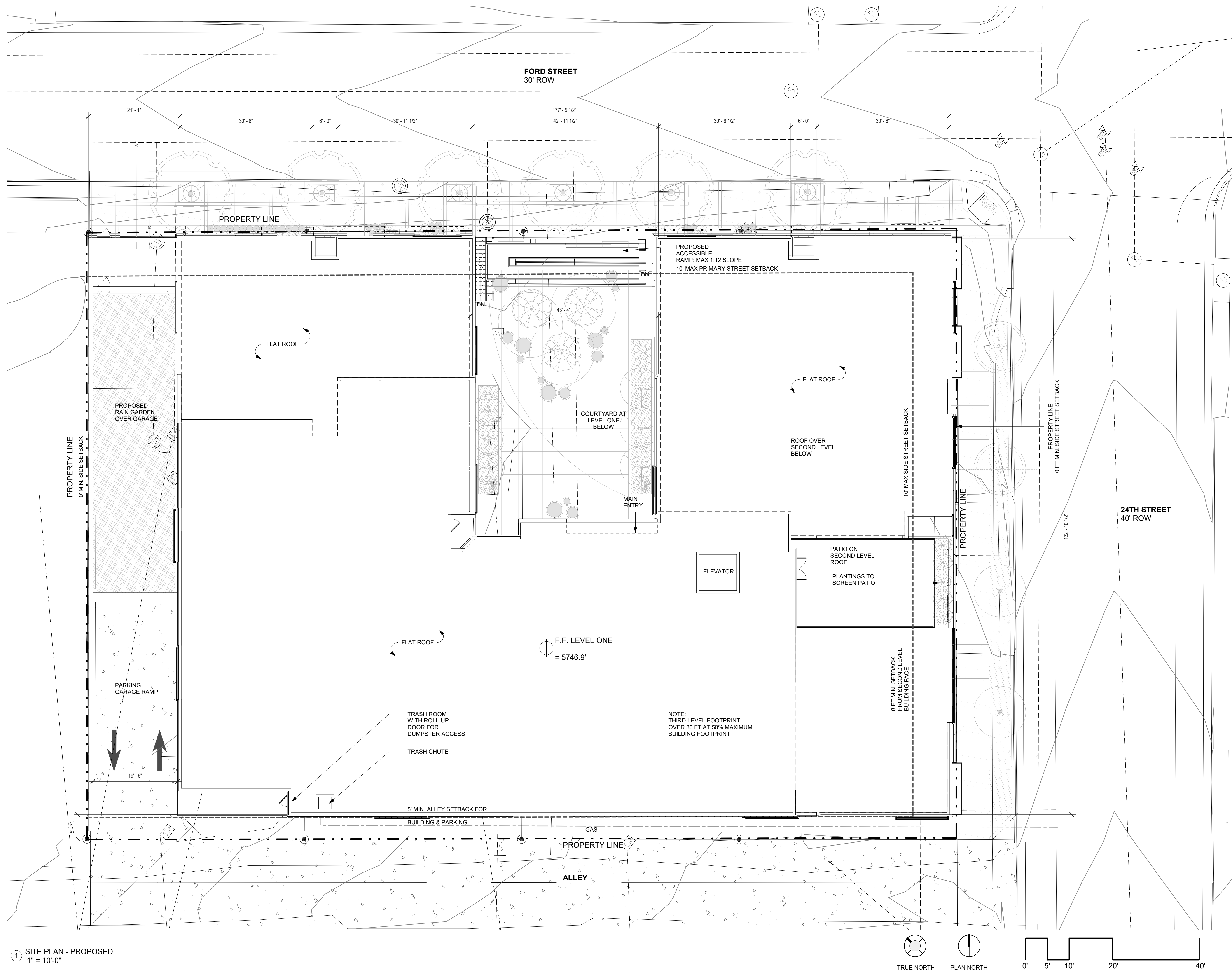
NOT FOR CONSTRUCTION

PROJ. NUMBER:

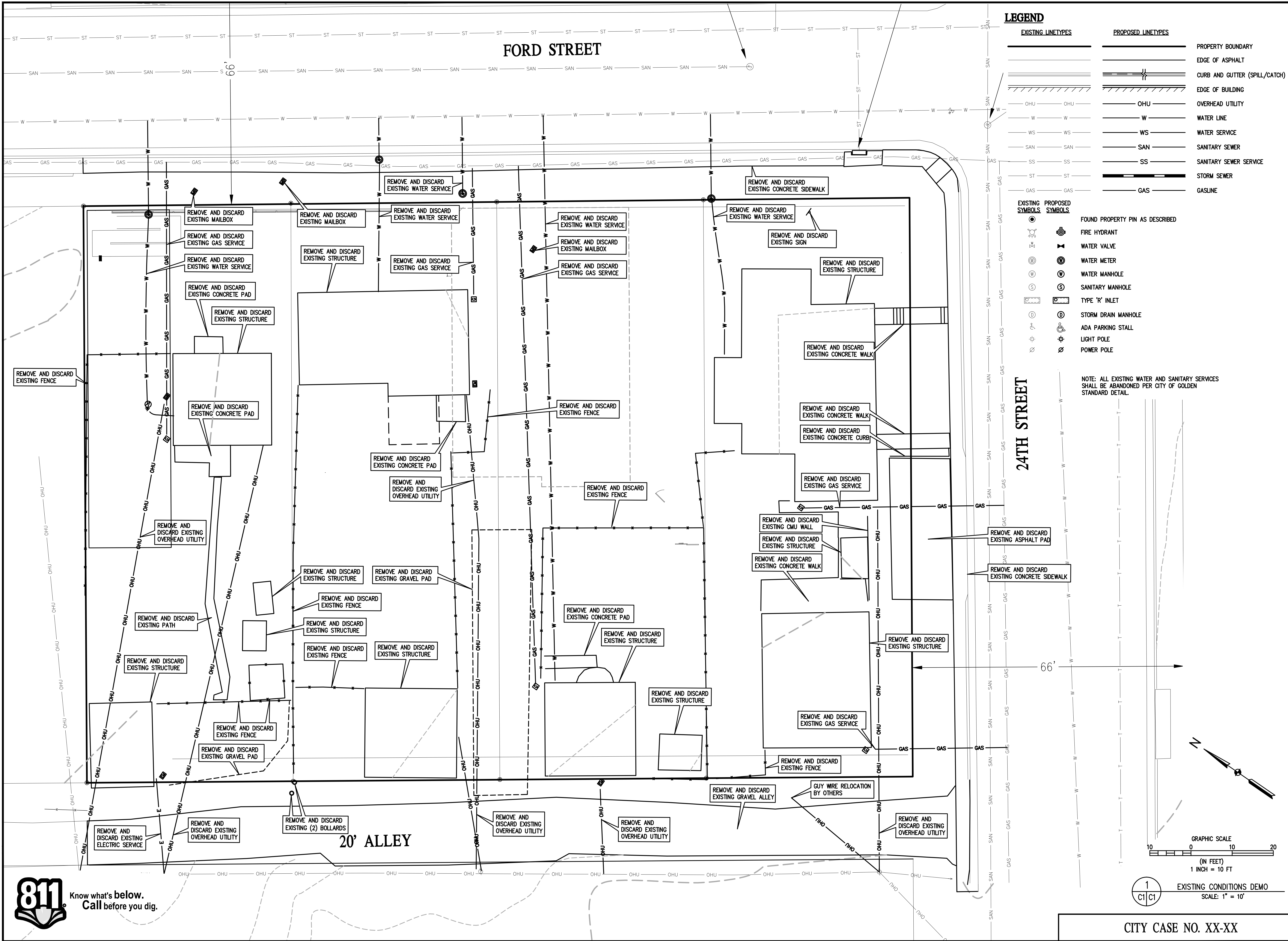
DATE:

DRAWING NUMBER:

A1



N:\303241 - Golden Gateway Apartments\Drawings\3241 CIVIL DRAWINGS.dwg, 8/24/2016 10:37:21 PM, Noah Nemmers



BASELINE
Engineering • Planning • Surveying
1850 FORD STREET • GOLDEN, COLORADO 80401
P. 303.400.9965 • F. 303.400.9965 • www.baselinecorp.com

DESIGNED BY	DATE	REVISION	DESCRIPTION
NUN	8/25/16	CITY SUBMITTAL NO. 2	
DRAWN BY			
CREATED BY			

VERI GREEN RESIDENTIAL DEVELOPMENT
JEFFERSON COUNTY
CITY OF GOLDEN
GOLDEN GATEWAY APARTMENTS
24TH & FORD STREET
EXISTING CONDITIONS DEMO

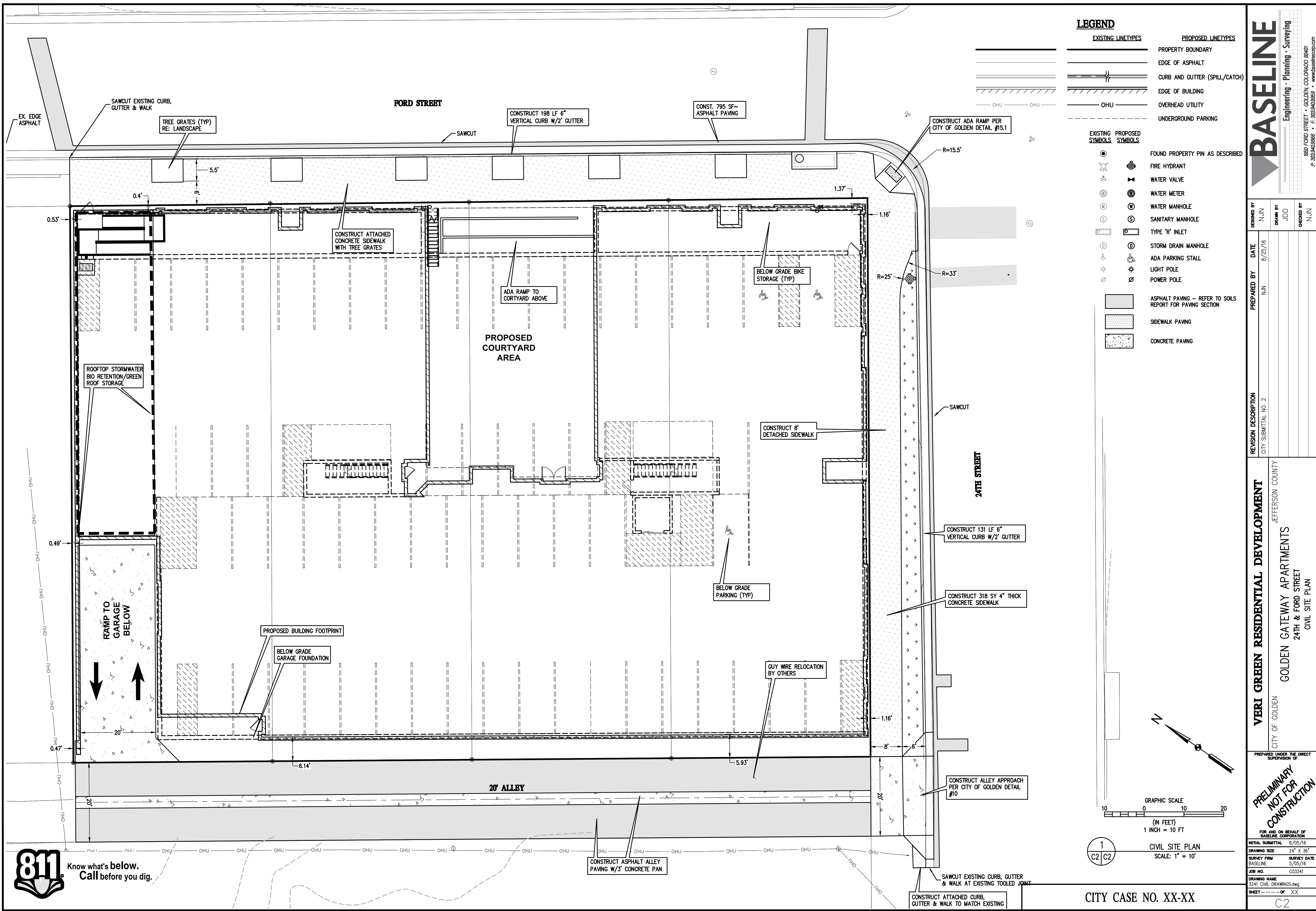
**PRELIMINARY
NOT FOR
CONSTRUCTION**

FOR AS SHOWN ON BEHALF OF
BASELINE CORPORATION

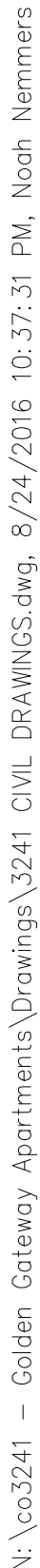
INITIAL SUBMITTAL	8/05/16
DRAWING SIZE	24" x 36"
SURVEY FIRM	BASELINE
SURVEY DATE	5/05/16
JOB NO.	003241
DRAWING NAME	3241 CIVIL DRAWINGS.dwg
SHEET	OF XX


C1

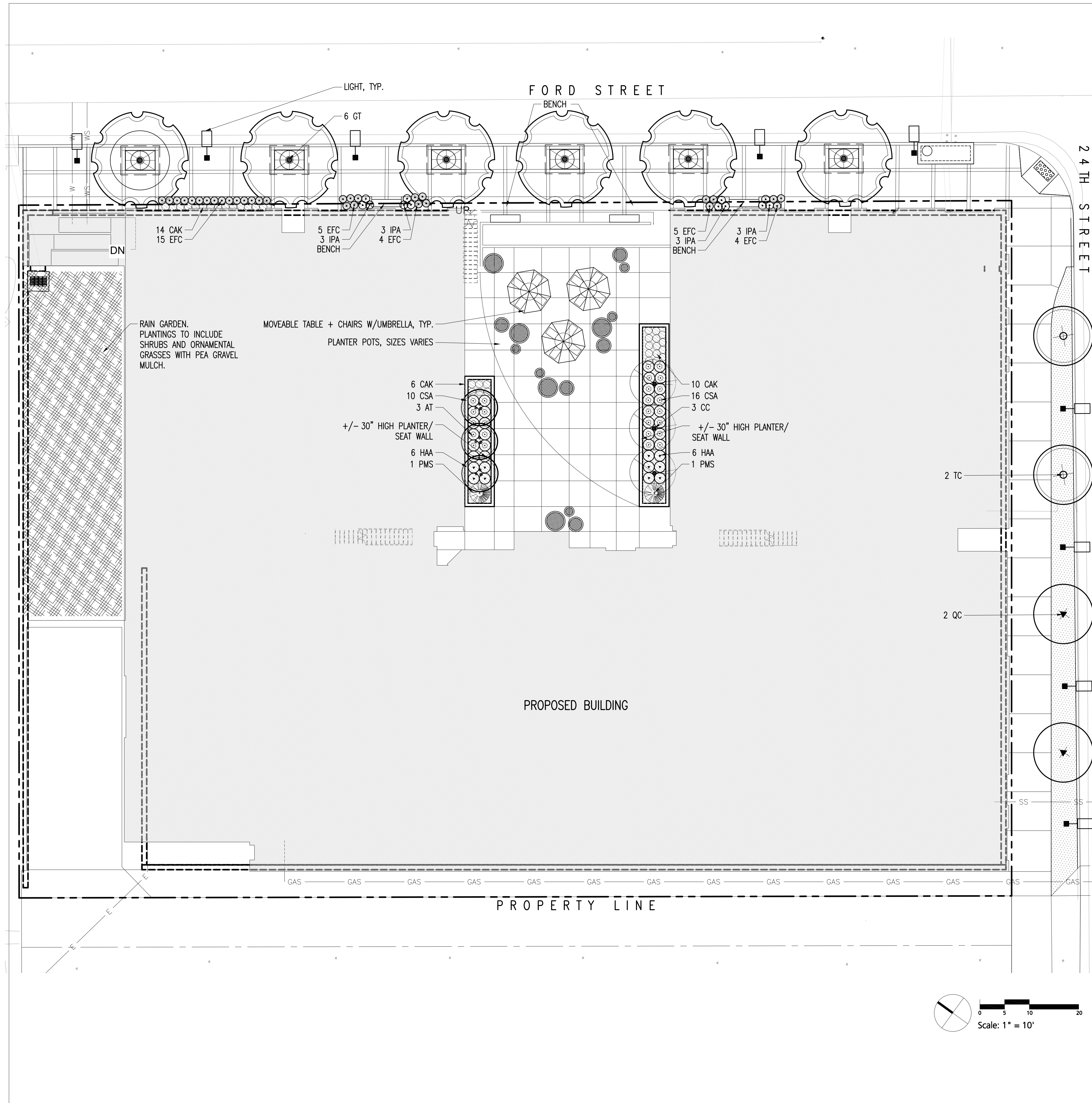
N:\303241 - Golden Gateway Apartments\Drawings\3241 CIVIL DRAWINGS.dwg, 8/24/2016 10:37:26 PM, Noah Nemmers



Know what's below.
Call before you dig.



<div>PREPARED UNDER THE DIRECT SUPERVISION OF</div> <div>PRELIMINARY NOT FOR CONSTRUCTION</div> <div>FOR AND ON BEHALF OF BASELINE CORPORATION</div> <div>INITIAL SUBMITTAL 8/05/16</div> <div>DRAWING SIZE 24" X 36"</div> <div>SURVEY FIRM BASELINE</div> <div>SURVEY DATE 5/05/16</div> <div>JOB NO. C03241</div> <div>DRAWING NAME 3241 CIVIL DRAWINGS.dwg</div> <div>SHEET --- OF XX</div> <div>C4</div>		<div>VERI GREEN RESIDENTIAL DEVELOPMENT</div> <div>CITY OF GOLDEN</div> <div>JEFFERSON COUNTY</div> <div>GOLDEN GATEWAY APARTMENTS</div> <div>24TH & FORD STREET</div> <div>UTILITY PLAN</div>		<div>REVISION DESCRIPTION</div> <div>CITY SUBMITTAL NO. 2</div> <div>PREPARED BY</div> <div>NJN</div> <div>DATE</div> <div>8/25/16</div>		<div>DESIGNED BY</div> <div>NJN</div> <div>DRAWN BY</div> <div>JDD</div> <div>CHECKED BY</div> <div>NJN</div>		<div> BASELINE</div> <div>Engineering • Planning • Surveying</div> <div>1950 FORD STREET • GOLDEN, COLORADO 80401</div> <div>P. 303.940.9969 • F. 303.940.9969 • www.baselinemcorp.com</div>	
---	--	--	--	--	--	---	--	---	--



GENERAL NOTES

- 1. ALL PLANT MATERIAL SHALL MEET OR EXCEED CURRENT AMERICAN STANDARD FOR NURSERY STOCK ANSI Z60.1 AND COLORADO NURSERY ACT AND ACCOMPANYING RULES AND REGULATIONS.
- 2. PLANT MATERIAL TO BE IRRIGATED WITH AUTOMATIC SYSTEM.

PLANTING NOTES

- 1. STAKE ALL NEW TREE LOCATIONS BASED ON THESE PLANS. OBTAIN LANDSCAPE ARCHITECT APPROVAL OF LOCATIONS PRIOR TO PLANTING.
- 2. PLANT QUANTITIES ARE PROVIDED FOR CONTRACTOR'S CONVENIENCE ONLY AND SHALL BE VERIFIED BY CONTRACTOR BY REVIEWING PLANTING PLAN SYMBOLS.
- 3. PLANT AND EDGING LAYOUT SHALL TAKE PRIORITY OVER IRRIGATION VALVE BOX LOCATIONS. INSTALLED VALVE BOXES WHICH CONFLICT WITH ACCEPTED PLANT AND EDGING LAYOUT SHALL BE MOVED TO A LOCATION BETWEEN PLANTS AS DIRECTED BY ARCHITECT AT NO ADDITIONAL COST TO OWNER.
- 4. CONTRACTOR SHALL BE RESPONSIBLE FOR MAINTAINING ALL PLANT MATERIAL IN A HEALTHY STATE DURING CONSTRUCTION. ANY DAMAGE TO PLANT MATERIAL DUE TO NEGLIGENCE BY THE CONTRACTOR SHALL BE REPAIRED OR REPLACED AT THE CONTRACTOR'S EXPENSE.
- 5. PROJECT INCLUDES EXTENSIVE UTILITY SYSTEMS MANY OF WHICH ARE CLOSE TO THE FINISHED SURFACE. VERIFY LOCATION AND DEPTH OF ALL UTILITIES PRIOR TO PLANTING. REPORT ANY CONFLICTS TO ARCHITECT.
- 6. ALL SHRUB, PERENNIAL AND GROUND COVER AREAS ARE TO BE PREPARED AS CONTINUOUS BEDS IN ACCORDANCE WITH SPECIFICATIONS.
- 7. ALL SHRUB AND GROUND COVER BEDS SHALL BE GRADED TO DRAIN WITH A MINIMUM 2% CROSS SLOPE.
- 8. ALL SHRUBS AND TREES TO BE MULCHED WITH GORILLA HAIR WOOD MULCH, NO WEED BARRIER FABRIC, UNLESS OTHERWISE NOTED, 3" MIN. DEPTH, RE: SPECS.
- 9. TREES IN TREE GRATES AND ON GRADE PLANTERS TO HAVE DRAINS.

PLANT LEGEND

ABBR.	BOTANICAL NAME	COMMON NAME	SIZE	COMMENTS
DECIDUOUS TREES				
GT	GLEDTISIA TRIACANTHOS INERMIS 'IMPERIAL'	IMPERIAL HONEYLOCUST	2.5" CAL	B&B, STAKE & GUY
TC	TILIA CORDATA 'CORZAM'	CORINTHIAN LINDEN	2" CAL	B&B, STAKE & GUY
QC	QUERCUS ROBUR 'CRIMSCHMIDT'	CRIMSON SPIRE OAK	2" CAL	B&B, STAKE & GUY
ORNAMENTAL SHRUBS				
AT	ACER TATARICUM 'HOT WINGS'	HOT WINGS MAPLE	6' HT, CLUMP	B&B, STAKE & GUY
CC	CERCIS CANADENSIS	EASTERN REDBUD	6' HT, CLUMP	B&B, STAKE & GUY
SHRUBS				
CAB	CORNUS ALBA 'BUD'S YELLOW'	BUD'S YELLOW DOGWOOD	5 GAL.	CONT.
CSA	CORNUS SERICEA 'ARCTIC FIRE'	ARCTIC FIRE DOGWOOD	5 GAL.	CONT.
HAA	HYDRANGEA ARBORESCENS 'ANNABELLE'	ANNABELLE SMOOTH HYDRANGEA	5 GAL.	CONT.
PMS	PINUS MUGO 'SLOWMOUND'	SLOWMOUND MUGO PINE	5 GAL.	CONT.
PERENNIALS/GRASSES/VINES				
CAK	CALAMAGROSTIS ACUTIFLORA 'KARL FOERSTER'	FEATHER REED GRASS	1 GAL.	CONT.
DC	DESCHAMPSIA CESPITOSA	TUFTED HAIR GRASS	1 GAL.	CONT.
EFC	EUONYMUS FORTUNEI 'COLORATUS'	PURPLELEAF WINTERCREEPER	1 GAL.	CONT.
IPA	IRIS PALLIDA 'AGENTEA VARIEGATA'	CREAM VARIEGATED SWEET IRIS	1 GAL.	CONT.

SYMBOLS LEGEND

	GORILLA HAIR WOOD MULCH		IRRIGATED SOD
	TREE GRATE		



Copyright: This document is an instrument of services, and as such remains the property of the architect. Permission for use of this document is limited and can be extended only by agreement with ej architecture PLLC.

GOLDEN GATEWAY APARTMENTS
GOLDEN, COLORADO

DRW AA
CHK EJ, SW

REVISION SCHEDULE		
REVISION NUMBER	REVISION DESCRIPTION	REVISION DATE

ISSUE RECORD		
NO.	DESCRIPTION	DATE
1	CITY SUBMITTAL 1	8/5/2016
2	CITY SUBMITTAL 2	8/25/2016
3		
4		
5		
6		

SHEET CONTENTS:
LANDSCAPE PLAN

NOT FOR CONSTRUCTION

PROJ. NUMBER:
DATE:
DRAWING NUMBER:



1 NORTH ELEVATION - FORD ST
1/8" = 1'-0"



2 EAST ELEVATION - 24TH ST
1/8" = 1'-0"

MATERIAL LEGEND	
A	BRICK 1: TAN/BEIGE - BROWN MIX
B	BRICK 2: RED - BROWN MIX
C	METAL SIDING: MUTED MATTE FINISH
D	CEMENTITIOUS PANEL 1: PAINTED WITH EARTH TONE PALETTE W/ CONTRASTED TRIM ACCENT
E	CEMENTITIOUS PANEL 2: EARTH TONE PALETTE W/ CONTRASTED TRIM ACCENT
F	ALUMINUM STOREFRONT WINDOW W/ INFILL PANELS OF SIMILAR TONE AS GLAZING OR FRAME
G	CASEMENT WINDOW W/ MULLIONS
H	CASEMENT WINDOW
I	ALUMINUM STOREFRONT ENTRY
J	DOOR W/ FULL VISION GLAZING
K	JULIET BALCONY PAINTED WITH WARM EARTHTONE TO COMPLIMENT WINDOW FRAMING
L	AWNINGS WITH DECORATIVE WALL MOUNTS
M	HANDRAIL/GUARDRAIL WITH SOLID INFILL PANELS
N	CONCRETE COURSING AT 18" DEPTH
O	WOOD ACCENT BANDING (12"X12")
P	METAL CORNICE IN COMPLIMENTARY EARTH TONE
Q	GARAGE VENTING METAL MESH W/ COLOR TO MATCH WINDOW FRAMING
R	EXPOSED STAINED CONCRETE



Copyright: This document is an instrument of services, and as such remains the property of the architect. Permission for use of this document is limited and can be extended only by agreement with ej architecture PLLC.

GOLDEN GATEWAY APARTMENTS

GOLDEN, COLORADO

DRW AA
CHK EJ, SW

REVISIONS

REVISION SCHEDULE		
REVISION NUMBER	REVISION DESCRIPTION	REVISION DATE

ISSUE RECORD

NO.	DESCRIPTION	DATE
1	CITY SUBMITTAL 1	8/3/2016
2	CITY SUBMITTAL 2	8/25/2016
3		
4		
5		
6		

SHEET CONTENTS:
ELEVATIONS

NOT FOR CONSTRUCTION

PROJ. NUMBER:

DATE:

DRAWING NUMBER:

A2

GOLDEN GATEWAY
APARTMENTS
GOLDEN, COLORADO

DRW AA
CHK EJ, SW

REVISIONS

REVISION SCHEDULE		
REVISION NUMBER	REVISION DESCRIPTION	REVISION DATE

ISSUE RECORD

NO.	DESCRIPTION	DATE
1	CITY SUBMITTAL 1	8/3/2016
2	CITY SUBMITTAL 2	8/25/2016
3		
4		
5		
6		

SHEET CONTENTS:
ELEVATIONS

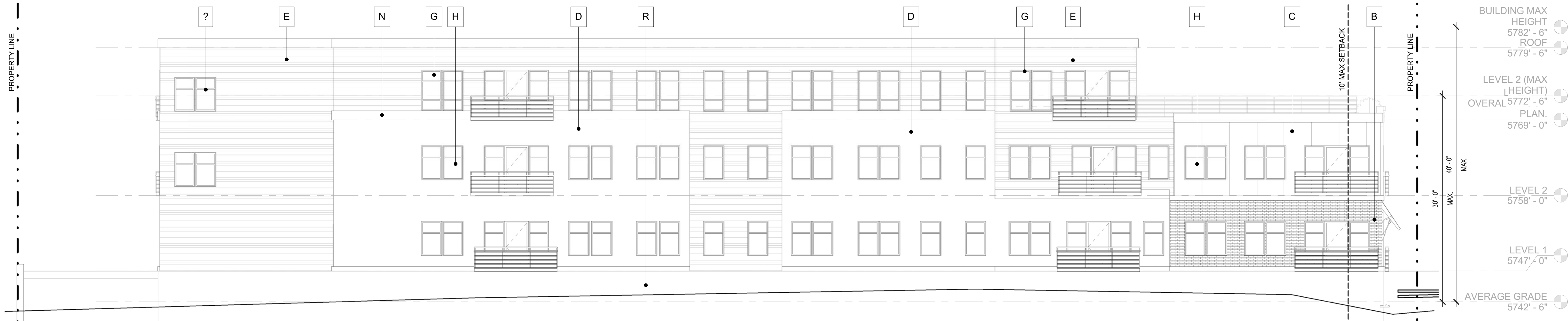
NOT FOR CONSTRUCTION

PROJ. NUMBER:

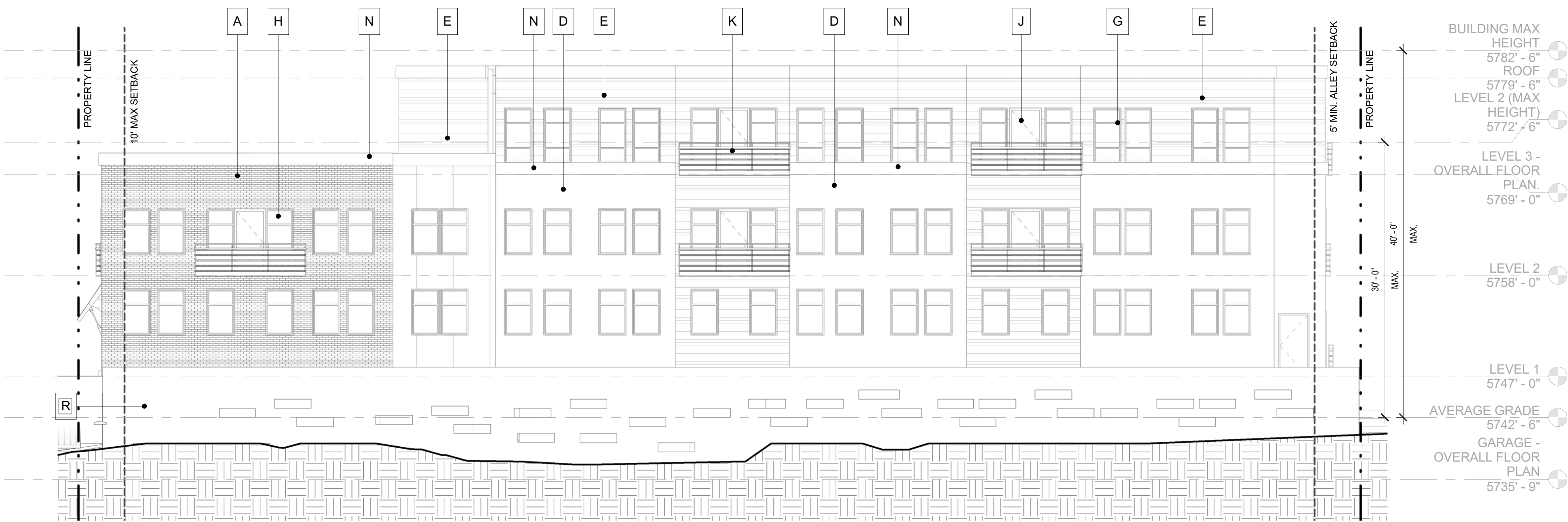
DATE:

DRAWING NUMBER:

A3



① SOUTH ELEVATION - ALLEY
1/8" = 1'-0"



② WEST ELEVATION
1/8" = 1'-0"

MATERIAL LEGEND

A	BRICK 1:	TAN/BEIGE - BROWN MIX
B	BRICK 2:	RED - BROWN MIX
C	METAL SIDING:	MUTED MATTE FINISH
D	CEMENTITIOUS PANEL 1:	PAINTED WITH EARTH TONE PALETTE W/ CONTRASTED TRIM ACCENT
E	CEMENTITIOUS PANEL 2:	EARTH TONE PALETTE W/ CONTRASTED TRIM ACCENT
F	ALUMINUM STOREFRONT WINDOW W/ INFILL PANELS OF SIMILAR TONE AS GLAZING OR FRAME	
G	CASEMENT WINDOW W/ MULLIONS	
H	CASEMENT WINDOW	
I	ALUMINUM STOREFRONT ENTRY	
J	DOOR W/ FULL VISION GLAZING	
K	JULIET BALCONY PAINTED WITH WARM EARTHTONE TO COMPLIMENT WINDOW FRAMING	
L	AWNINGS WITH DECORATIVE WALL MOUNTS	
M	HANDRAIL/GUARDRAIL WITH SOLID INFILL PANELS	
N	CONCRETE COURSING AT 18" DEPTH	
O	WOOD ACCENT BANDING (12"X12")	
P	METAL CORNICE IN COMPLIMENTARY EARTH TONE	
Q	GARAGE VENTING METAL MESH W/ COLOR TO MATCH WINDOW FRAMING	
R	EXPOSED STAINED CONCRETE	



Copyright: This document is an instrument of services, and as such remains the property of the architect. Permission for use of this document is limited and can be extended only by agreement with ej architecture PLLC.

GOLDEN GATEWAY
APARTMENTS
GOLDEN, COLORADO

DRW AA
CHK EJ, SW

REVISIONS

REVISION SCHEDULE		
REVISION NUMBER	REVISION DESCRIPTION	REVISION DATE

ISSUE RECORD

NO.	DESCRIPTION	DATE
1	CITY SUBMITTAL 1	8/5/2016
2	CITY SUBMITTAL 2	8/25/2016
3		
4		
5		
6		

SHEET CONTENTS:
SITE LIGHTING PLAN

NOT FOR CONSTRUCTION

PROJ. NUMBER:

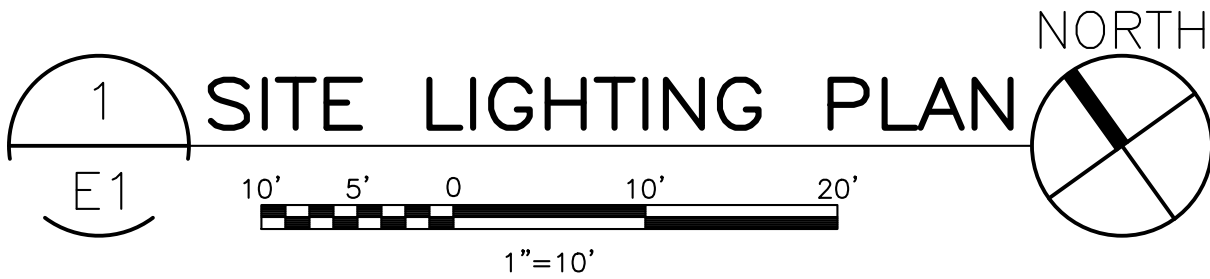
DATE:

DRAWING NUMBER:

E1



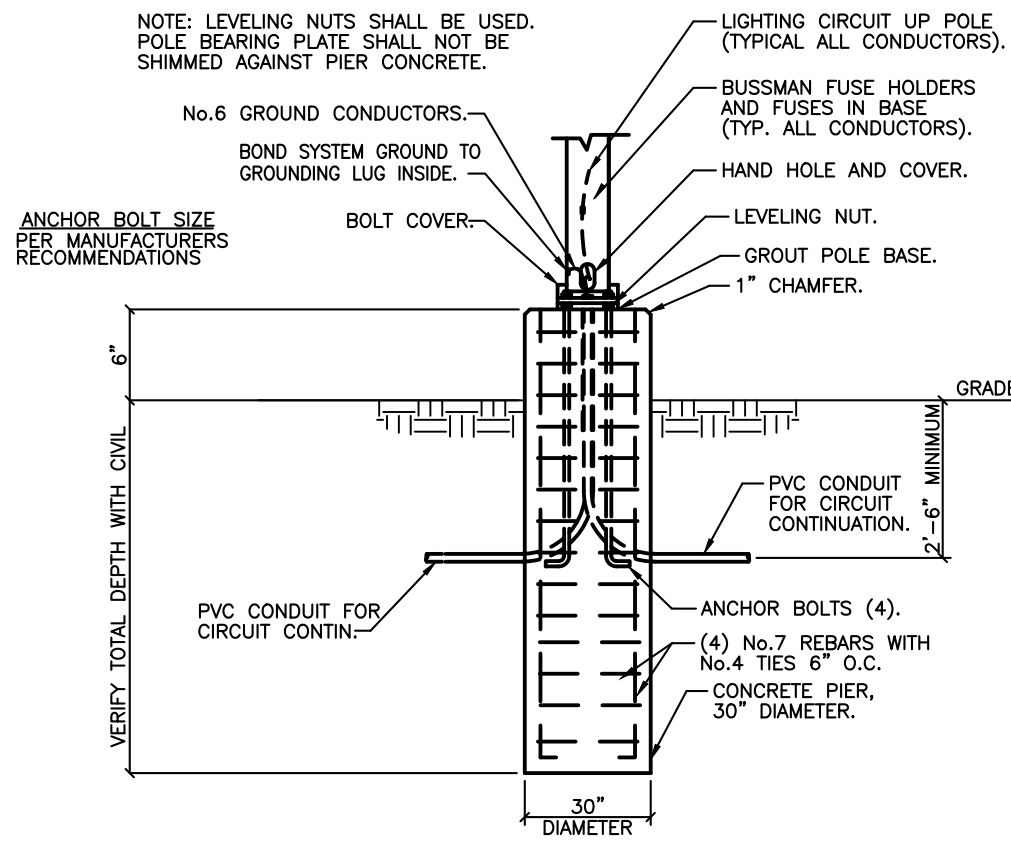
LIGHTING STATISTICS					
Description	Avg	Max	Min	Max/Min	Avg/Min
SITE PHOTOMETRICS	2.0 fc	19.5 fc	0.0 fc	N/A	N/A



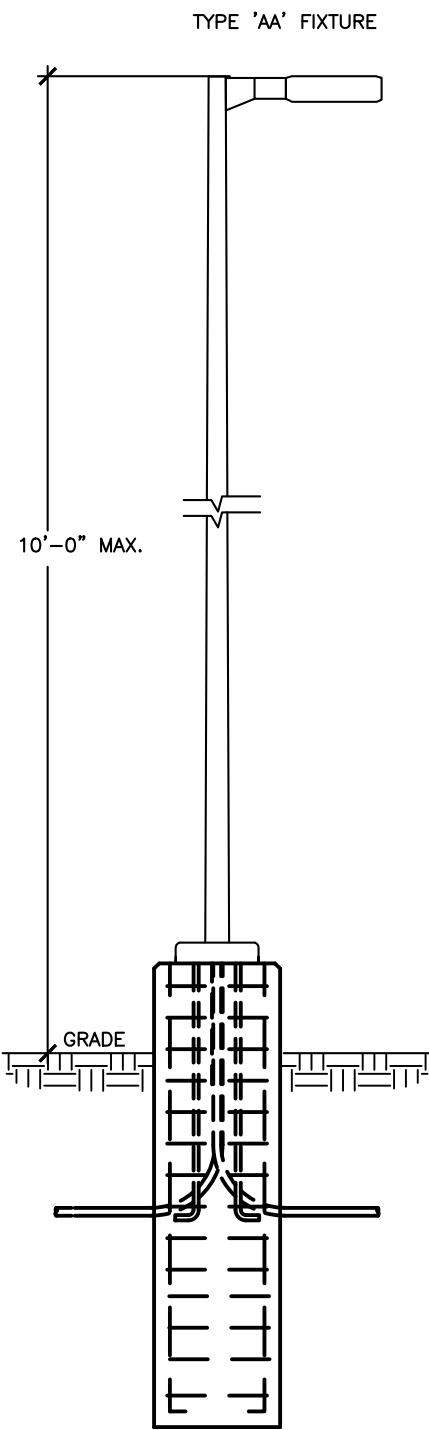
GENERAL NOTES:

- ALL EXTERIOR SITE LIGHTING FIXTURES SHALL BE CONTROLLED BY AN ASTRONOMICAL TIMECLOCK OR PHOTOCELL.
- PHOTOMETRIC CALCULATIONS HAVE BEEN DETERMINED USING A LIGHT LOSS FACTOR OF 1.0
- VALUES SHOWN ARE MAINTAINED HORIZONTAL ILLUMINANCE VALUES MEASURED AT GRADE.
- ALL LIGHT FIXTURES SHALL BE FULLY SHIELDED AND DIRECT LIGHT DOWNWARDS.
- THERE WILL BE NO OFF-SITE GLARE ALLOWED.

GIVEN & ASSOCIATES INC
MECHANICAL & ELECTRICAL ENGINEERS
735 S. Xenon Ct. #201
Lakewood, Colorado 80228
Ph: 303.716.1270
Fax: 303.716.1272
www.givenandassociates.com
Project # 16102



1 POLE BASE DETAIL
E2 N.T.S.



2 POLE DETAIL
E2 N.T.S.

LUMINAIRE SCHEDULE							
PLAN MARK	MOUNTING	DESCRIPTION	MANUFACTURER AND CATALOG NUMBER	VOLTAGE	NO. OF LAMPS	LAMP TYPE	REMARKS
AA	POLE	10' AFG	PHILIPS SFA-XX-1-5-30LA-NW-UNV-BRP-XX	120/277	--	34W LED	WET LOCATION
BB	WALL MOUNT	WALL PACK	PHILIPS LPW16-58BZ	120/277	--	36W LED	WET LOCATION
SL1	RECESSED WALL MOUNT	STEP LIGHT	PHILIPS 942L-DG-C-31LA-NW-UNV-BRP-TP	120/277	--	31W LED	WET LOCATION
SL2	RECESSED WALL MOUNT	STEP LIGHT	PHILIPS 942L-DG-C-20LA-NW-UNV-BRP-TP	120/277	--	20W LED	WET LOCATION



Philips Gardco SlenderForm luminaires combine LED performance excellence and advanced Philips Gardco LED thermal management technology with a distinct styling to provide outdoor area lighting that is both energy efficient and aesthetically pleasing. SlenderForm is defined by its high performance, sleek low profile design and rugged construction.

Ordering guide

Prefix	Controls	Mounting	Optical System*	Wattage	LED Temp	Voltage	Finish	Options
SFA-	Standard luminaire	1 Standard	Standard Optic Position	350 mA	CW	120	BRP	F1 Fixing
SFA-	Standard luminaire	2 20/180°	2 Type 2	30LA*	5700K	120V	BLP	LF Line Fixing
SFA-	Standard luminaire	3 20/90°	3 Type 3	30LA	75CRI	208V	BP	PC10 Photocell with Recastable (Includes PCRS Recastable)
SFA-	Standard luminaire	4 20/90°	4 Type 4	30LA	75CRI	208V	WP	PCB10 Photocell Button
SFA-	Standard luminaire	5 20/90°	5 Type 5	30LA	75CRI	208V	NP	PCB10 Photocell Button
SFA-	Standard luminaire	6 20/90°	6 Type 6	30LA	75CRI	208V	NP	PCB10 Photocell Button
SFA-	Standard luminaire	7 20/90°	7 Type 7	30LA	75CRI	208V	NP	PCB10 Photocell Button
SFA-	Standard luminaire	8 20/90°	8 Type 8	30LA	75CRI	208V	NP	PCB10 Photocell Button
SFA-	Standard luminaire	9 20/90°	9 Type 9	30LA	75CRI	208V	NP	PCB10 Photocell Button
SFA-	Standard luminaire	10 20/90°	10 Type 10	30LA	75CRI	208V	NP	PCB10 Photocell Button
SFA-	Standard luminaire	11 20/90°	11 Type 11	30LA	75CRI	208V	NP	PCB10 Photocell Button
SFA-	Standard luminaire	12 20/90°	12 Type 12	30LA	75CRI	208V	NP	PCB10 Photocell Button
SFA-	Standard luminaire	13 20/90°	13 Type 13	30LA	75CRI	208V	NP	PCB10 Photocell Button
SFA-	Standard luminaire	14 20/90°	14 Type 14	30LA	75CRI	208V	NP	PCB10 Photocell Button
SFA-	Standard luminaire	15 20/90°	15 Type 15	30LA	75CRI	208V	NP	PCB10 Photocell Button
SFA-	Standard luminaire	16 20/90°	16 Type 16	30LA	75CRI	208V	NP	PCB10 Photocell Button
SFA-	Standard luminaire	17 20/90°	17 Type 17	30LA	75CRI	208V	NP	PCB10 Photocell Button
SFA-	Standard luminaire	18 20/90°	18 Type 18	30LA	75CRI	208V	NP	PCB10 Photocell Button
SFA-	Standard luminaire	19 20/90°	19 Type 19	30LA	75CRI	208V	NP	PCB10 Photocell Button
SFA-	Standard luminaire	20 20/90°	20 Type 20	30LA	75CRI	208V	NP	PCB10 Photocell Button
SFA-	Standard luminaire	21 20/90°	21 Type 21	30LA	75CRI	208V	NP	PCB10 Photocell Button
SFA-	Standard luminaire	22 20/90°	22 Type 22	30LA	75CRI	208V	NP	PCB10 Photocell Button
SFA-	Standard luminaire	23 20/90°	23 Type 23	30LA	75CRI	208V	NP	PCB10 Photocell Button
SFA-	Standard luminaire	24 20/90°	24 Type 24	30LA	75CRI	208V	NP	PCB10 Photocell Button
SFA-	Standard luminaire	25 20/90°	25 Type 25	30LA	75CRI	208V	NP	PCB10 Photocell Button
SFA-	Standard luminaire	26 20/90°	26 Type 26	30LA	75CRI	208V	NP	PCB10 Photocell Button
SFA-	Standard luminaire	27 20/90°	27 Type 27	30LA	75CRI	208V	NP	PCB10 Photocell Button
SFA-	Standard luminaire	28 20/90°	28 Type 28	30LA	75CRI	208V	NP	PCB10 Photocell Button
SFA-	Standard luminaire	29 20/90°	29 Type 29	30LA	75CRI	208V	NP	PCB10 Photocell Button
SFA-	Standard luminaire	30 20/90°	30 Type 30	30LA	75CRI	208V	NP	PCB10 Photocell Button
SFA-	Standard luminaire	31 20/90°	31 Type 31	30LA	75CRI	208V	NP	PCB10 Photocell Button
SFA-	Standard luminaire	32 20/90°	32 Type 32	30LA	75CRI	208V	NP	PCB10 Photocell Button
SFA-	Standard luminaire	33 20/90°	33 Type 33	30LA	75CRI	208V	NP	PCB10 Photocell Button
SFA-	Standard luminaire	34 20/90°	34 Type 34	30LA	75CRI	208V	NP	PCB10 Photocell Button
SFA-	Standard luminaire	35 20/90°	35 Type 35	30LA	75CRI	208V	NP	PCB10 Photocell Button
SFA-	Standard luminaire	36 20/90°	36 Type 36	30LA	75CRI	208V	NP	PCB10 Photocell Button
SFA-	Standard luminaire	37 20/90°	37 Type 37	30LA	75CRI	208V	NP	PCB10 Photocell Button
SFA-	Standard luminaire	38 20/90°	38 Type 38	30LA	75CRI	208V	NP	PCB10 Photocell Button
SFA-	Standard luminaire	39 20/90°	39 Type 39	30LA	75CRI	208V	NP	PCB10 Photocell Button
SFA-	Standard luminaire	40 20/90°	40 Type 40	30LA	75CRI	208V	NP	PCB10 Photocell Button
SFA-	Standard luminaire	41 20/90°	41 Type 41	30LA	75CRI	208V	NP	PCB10 Photocell Button
SFA-	Standard luminaire	42 20/90°	42 Type 42	30LA	75CRI	208V	NP	PCB10 Photocell Button
SFA-	Standard luminaire	43 20/90°	43 Type 43	30LA	75CRI	208V	NP	PCB10 Photocell Button
SFA-	Standard luminaire	44 20/90°	44 Type 44	30LA	75CRI	208V	NP	PCB10 Photocell Button
SFA-	Standard luminaire	45 20/90°	45 Type 45	30LA	75CRI	208V	NP	PCB10 Photocell Button
SFA-	Standard luminaire	46 20/90°	46 Type 46	30LA	75CRI	208V	NP	PCB10 Photocell Button
SFA-	Standard luminaire	47 20/90°	47 Type 47	30LA	75CRI	208V	NP	PCB10 Photocell Button
SFA-	Standard luminaire	48 20/90°	48 Type 48	30LA	75CRI	208V	NP	PCB10 Photocell Button
SFA-	Standard luminaire	49 20/90°	49 Type 49	30LA	75CRI	208V	NP	PCB10 Photocell Button
SFA-	Standard luminaire	50 20/90°	50 Type 50	30LA	75CRI	208V	NP	PCB10 Photocell Button
SFA-	Standard luminaire	51 20/90°	51 Type 51	30LA	75CRI	208V	NP	PCB10 Photocell Button
SFA-	Standard luminaire	52 20/90°	52 Type 52	30LA	75CRI	208V	NP	PCB10 Photocell Button
SFA-	Standard luminaire	53 20/90°	53 Type 53	30LA	75CRI	208V	NP	PCB10 Photocell Button
SFA-	Standard luminaire	54 20/90°	54 Type 54	30LA	75CRI	208V	NP	PCB10 Photocell Button
SFA-	Standard luminaire	55 20/90°	55 Type 55	30LA	75CRI	208V	NP	PCB10 Photocell Button
SFA-	Standard luminaire	56 20/90°	56 Type 56	30LA	75CRI	208V	NP	PCB10 Photocell Button
SFA-	Standard luminaire	57 20/90°	57 Type 57	30LA	75CRI	208V	NP	PCB10 Photocell Button
SFA-	Standard luminaire	58 20/90°	58 Type 58	30LA	75CRI	208V	NP	PCB10 Photocell Button
SFA-	Standard luminaire	59 20/90°	59 Type 59	30LA	75CRI	208V	NP	PCB10 Photocell Button
SFA-	Standard luminaire	60 20/90°	60 Type 60	30LA	75CRI	208V	NP	PCB10 Photocell Button
SFA-	Standard luminaire	61 20/90°	61 Type 61	30LA	75CRI	208V	NP	PCB10 Photocell Button
SFA-	Standard luminaire	62 20/90°	62 Type 62	30LA	75CRI	208V	NP	PCB10 Photocell Button
SFA-	Standard luminaire	63 20/90°	63 Type 63	30LA	75CRI	208V	NP	PCB10 Photocell Button
SFA-	Standard luminaire	64 20/90°	64 Type 64	30LA	75CRI	208V	NP	PCB10 Photocell Button
SFA-	Standard luminaire	65 20/90°	65 Type 65	30LA	75CRI	208V	NP	PCB10 Photocell Button
SFA-	Standard luminaire	66 20/90°	66 Type 66	30LA	75CRI	208V	NP	PCB10 Photocell Button
SFA-	Standard luminaire	67 20/90°	67 Type 67	30LA	75CRI	208V	NP	PCB10 Photocell Button
SFA-	Standard luminaire	68 20/90°	68 Type 68	30LA	75CRI	208V	NP	PCB10 Photocell Button
SFA-	Standard luminaire	69 20/90°	69 Type 69	30LA	75CRI	208V	NP	PCB10 Photocell Button
SFA-	Standard luminaire	70 20/90°	70 Type 70	30LA	75CRI	208V	NP	PCB10 Photocell Button
SFA-	Standard luminaire	71 20/90°	71 Type 71	30LA	75CRI	208V	NP	PCB10 Photocell Button
SFA-	Standard luminaire	72 20/90°	72 Type 72	30LA	75CRI	208V	NP	PCB10 Photocell Button
SFA-	Standard luminaire	73 20/90°	73 Type 73	30LA	75CRI	208V	NP	PCB10 Photocell Button
SFA-	Standard luminaire	74 20/90°	74 Type 74	30LA	75CRI	208V	NP	PCB10 Photocell Button
SFA-	Standard luminaire	75 20/90°	75 Type 75	30LA	75CRI	208V	NP	PCB10 Photocell Button
SFA-	Standard luminaire	76 20/90°	76 Type 76	30LA	75CRI	208V	NP	PCB10 Photocell Button
SFA-	Standard luminaire	77 20/90°	77 Type 77	30LA	75CRI	208V	NP	PCB10 Photocell Button
SFA-	Standard luminaire	78 20/90°	78 Type 78	30LA	75CRI	208V	NP	PCB10 Photocell Button
SFA-	Standard luminaire	79 20/90°	79 Type 79	30LA	75CRI	208V	NP	PCB10 Photocell Button
SFA-	Standard luminaire	80 20/90°	80 Type 80	30LA	75CRI	208V	NP	PCB10 Photocell Button
SFA-	Standard luminaire	81 20/90°	81 Type 81	30LA	75CRI	208V	NP	PCB10 Photocell Button
SFA-	Standard luminaire	82 20/90°	82 Type 82	30LA	75CRI	208V	NP	PCB10 Photocell Button
SFA-	Standard luminaire	83 20/90°	83 Type 83	30LA	75CRI	208V	NP	PCB10 Photocell Button
SFA-	Standard luminaire	84 20/90°	84 Type 84	30LA	75CRI	208V	NP	PCB10 Photocell Button
SFA-	Standard luminaire	85 20/90°	85 Type 85	30LA	75CRI	208V	NP	PCB10 Photocell Button
SFA-	Standard luminaire	86 20/90°	86 Type 86	30LA	75CRI	208V	NP	PCB10 Photocell Button
SFA-	Standard luminaire	87 20/90°	87 Type 87	30LA	75CRI	208V	NP	PCB10 Photocell Button
SFA-	Standard luminaire	88 20/90°	88 Type 88	30LA	75CRI	208V	NP	PCB10 Photocell Button
SFA-	Standard luminaire	89 20/90°	89 Type 89	30LA	75CRI	208V	NP	PCB10 Photocell Button
SFA-	Standard luminaire	90 20/90°	90 Type 90	30LA	75CRI	208V	NP	PCB10 Photocell Button
SFA-	Standard luminaire	91 20/90°	91 Type 91	30LA	75CRI	208V	NP	PCB10 Photocell Button
SFA-	Standard luminaire	92 20/90°	92 Type 92	30LA	75CRI	208V	NP	PCB10 Photocell Button
SFA-	Standard luminaire	93 20/90°	93 Type 93	30LA	75CRI	208V	NP	PCB10 Photocell Button
SFA-	Standard luminaire	94 20/90°	94 Type 94	30LA	75CRI	208V	NP	PCB10 Photocell Button
SFA-	Standard luminaire	95 20/90°	95 Type 95	30LA	75CRI	208V	NP	PCB10 Photocell Button
SFA-	Standard luminaire	96 20/90°	96 Type 96	30LA	75CRI	208V	NP	PCB10 Photocell Button
SFA-	Standard luminaire	97 20/90°	97 Type 97	30LA	75CRI	208V	NP	PCB10 Photocell Button
SFA-	Standard luminaire	98 20/90°	98 Type 98	30LA	75CRI	208V	NP	PCB10 Photocell Button
SFA-	Standard luminaire	99 20/90°	99 Type 99	30LA	75CRI	208V	NP	PCB10 Photocell Button
SFA-	Standard luminaire	100 20/90°	100 Type 100	30LA	75CRI	208V	NP	PCB10 Photocell Button

- Available 120V-277V only.
- MISO and APD-MISO luminaires require one motion sensor per pole, ordered separately. See Accessories on page 2. Motion Response luminaires available 120V or 277V only.
- MRI and APD-MRI luminaires include an integral motion sensor. Not compatible with SFV fixtures.
- Luminaire door frame and optic assembly provided standard with a clear glass lens. Specify DL option for a Diffuse glass lens. See Options on page 2. Featuring unitized optic lens construction.
- See pages 7-8 for information on optical rotation prior to ordering.
- 30LA and 55LA Wattage not available with 347/480V HVL.
- Consult factory for lead times on Warm White.
- Provide specific input voltage.
- Not available in 480V. Provide specific input voltage.
- Not available with DCC configurations.
- Works with 3-pin or 5-pin NEMA photocell/dimming device.
- If ordered with DIM, APD, MRI, MISO, APD-MRI, APD-MRI, dimming will not be connected to NEMA photocell/dimming device and auxiliary connections are not connected (for future use only).



The Philips Stonco LytePro LED Small Wall Sconce LPW16 features outstanding value in a compact, architectural design. This wall sconce features state-of-the-art, long-life and maintenance savings, in a combined discreet LED package with high precision over-optic design. This powerful and precise combination offers outstanding energy savings with excellent photometric performance. LPW16 is ideal for entryways and corridors in addition to wall lighting applications requiring strong lateral spacing and forward pattern projection.

Stocked luminaires – Ordering guide (LPW16 products are only available in the following stock luminaire configurations shown)

Catalog Number	Description	Master Pack Qty	UPC Code
LPW16-58BZ	LPW16, 30W, 530mA, 4000K, 120-277V, Bronze textured paint	6	786034960540
LPW16-51BZPCB	LPW16, 30W, 530mA, 4000K, 120V, Bronze textured paint, w/button photocell	6	786034960557
LPW16-78BZ	LPW16, 40W, 700mA, 4000K, 120-277V, Bronze textured paint	6	786034960502
LPW16-78BGY	LPW16, 40W, 700mA, 4000K, 120-277V, Dark gray textured paint	6	786034960489
LPW16-71BZPCB	LPW16, 40W, 700mA, 4000K, 120V, Bronze textured paint, w/button photocell	6	786034960519

Stocked accessories – Ordering guide (Must be ordered separately)

Catalog Number	Description	Master Pack Qty	UPC Code
LPWCVRPLT-BZ	LPW Universal wall cover mounting plate, Bronze textured paint	(none)	786034960618

SL1/SL2

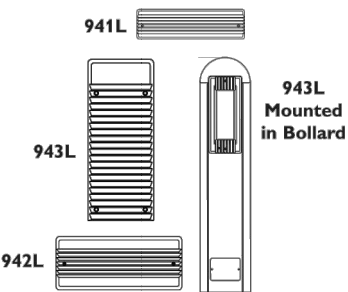
Job: _____
Type: _____
Notes: _____

94 Line LED

Page 1 of 3

941L, 942L and 943L Step and Aisle Lights

The Philips Gardco 941L, 942L and 943L recessed aisle lights are architecturally styled luminaires precisely constructed of die cast aluminum, providing light with high performance, long life LED systems. Retrofit kits are also available, making it possible to update installations of classic 941, 942 and 943 Philips Gardco fluorescent and HID step lights to LED without the need to replace the back housing. A field adjustable junction box enhances design flexibility. Self-compensating silicone gasketing completely excludes moisture, insects and contaminants. A choice of three (3) architecturally designed faceplates allows for a variety of applications. The ribbed guard faceplate offers vandal protection for glass lenses.



PREFIX	FACEPLATE	WALL TYPE	LED SELECTION	LED WATTAGE	VOLTAGE	FINISH	OPTIONS
--------	-----------	-----------	---------------	-------------	---------	--------	---------

Enter the order code into the appropriate box above. Omit WALL TYPE for 941