



# Rimrock / Golden Hills South Table Mountain Access

Open House: June 22, 2021

Go to [www.menti.com](https://www.menti.com) and use the code 89 95 40 0

# TONIGHT'S PRESENTERS

- Tom Hoby – Jefferson County Open Space, Director
- Kristina Duff – Jefferson County Open Space, Senior Planner
- Dan Hartman – City of Golden, Public Works Director
- Joe Puhr – City of Golden, Engineer
- Jay Renkens – MIG, Facilitator

## Also Available:

- Anne Beierle – City of Golden, Public Works Deputy Director
- Hillary Merritt – Jefferson County Open Space, Deputy Director
- Daniel Rubenstein – Jefferson County Open Space, Projects Manager
- Elliot Barth – MIG (Online Polling)



Photo Courtesy of JCOS

# AGENDA

- Project background
  - Jefferson County Open Space plans and recent public meetings
- Community feedback opportunities at key points in the presentation
  - Go to [www.menti.com](https://www.menti.com) and use the code 89 95 40 0 any time to log in.
  - You will also have the opportunity to submit comments using the “Chat” function in Zoom
- Golden Hills alternatives and online questions
- Rimrock alternatives and online questions
- Closing and next steps

# BACKGROUND / MEETING GOALS

Tom Hoby – Jefferson County Open Space

# AREAS OF FOCUS FOR TONIGHT'S MEETING



Photos Courtesy of JCOS

# PROJECT BACKGROUND:

## South Table Mountain Park Planning



**Natural  
Resources**



**Park &  
Heritage  
Resources**



**Trails**

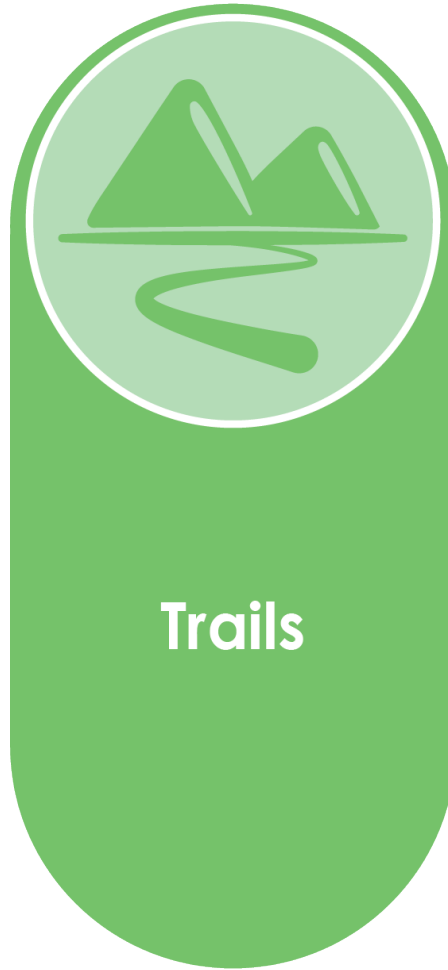


**Visitor  
Information &  
Management**



**Access &  
Trailheads**

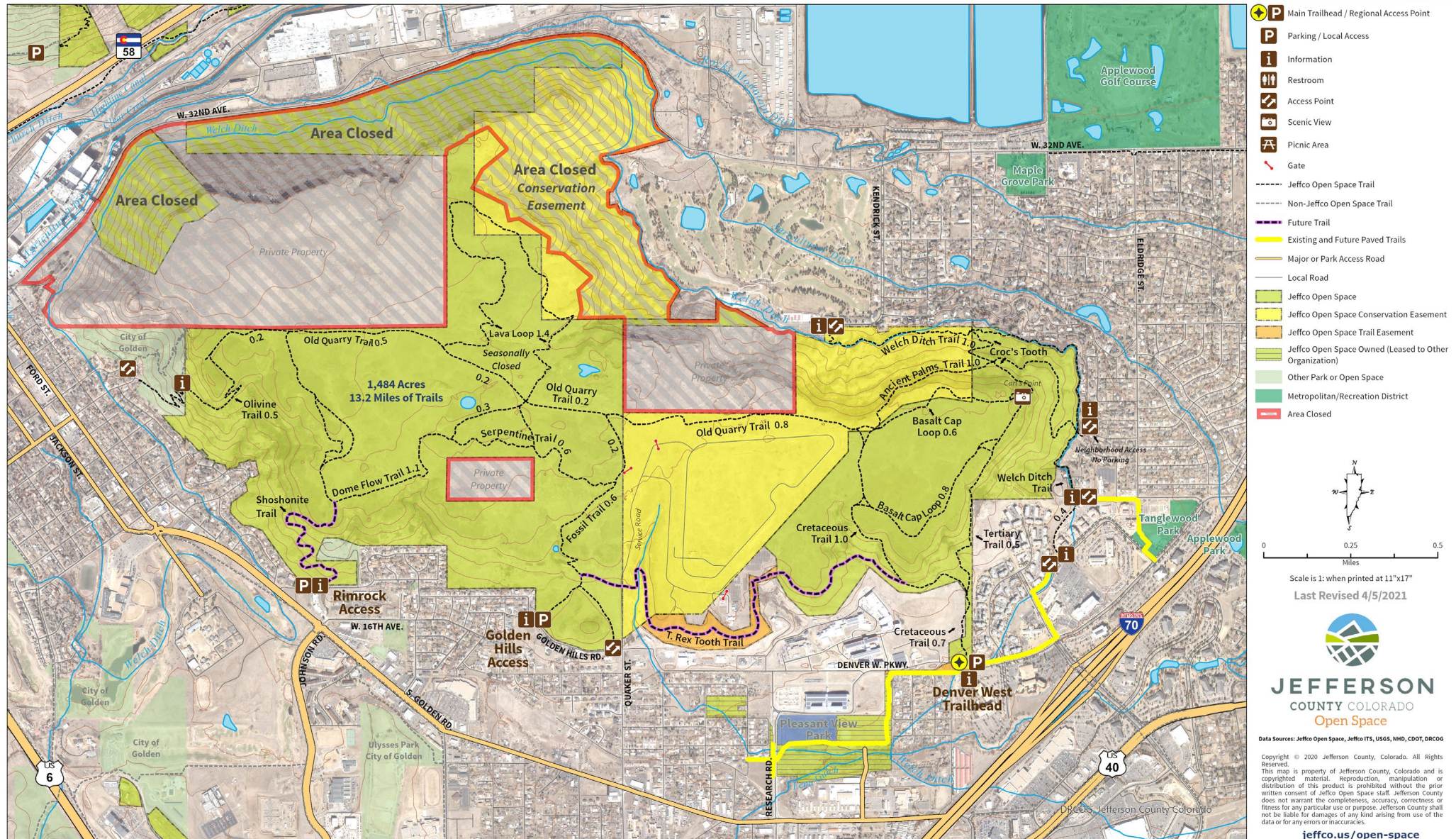
# South Table Mountain Park 2020 – 2023 Action Plan





# South Table Mountain Park

## Future Conditions with Current and Proposed Real Estate Holdings



# SOUTH TABLE MOUNTAIN PARK PLANNING PROCESS

## Access and Trailheads Component

### Planning

- ⑩ Park Access and Trailhead Evaluation
- ⑩ JCOS and City of Golden Engagement

### Community Engagement

- ⑩ Neighbors of South Table and Save the Mesas Meeting (3/31)
- ⑩ Community Meeting (4/8)
- ⑩ Public Comment Period (4/8 – 5/12)
- ⑩ Rimrock Neighborhood Meeting (5/11)
- ⑩ **Open House (6/22)**

### Design Review

- Collect Feedback
- Select Preferred Alternative
- Engineering Review of Designs

### Final Design & Implementation

- Present Final Designs to Parks, Recreation & Museums Advisory Board (PRAM)
- Post Final Designs on GuidingGolden.com (Q4 2021)
- Construction (2022)

# Interactive Community Survey

- You may only take this survey once per device.
  - After submitting your answers, you will not be able to retake the survey
  - During the survey, click on images to enlarge them on your screen.
  - The survey will be made available on *GuidingGolden.com* following the meeting until **July 2nd**.
- 
- Go to [www.menti.com](https://www.menti.com) and use the code 89 95 40 0

# GOLDEN HILLS ALTERNATIVES

Kristina Duff– Jefferson County Open Space



**Golden Hills Alternative A  
90 Degree Head-In  
Parking**





**Golden Hills Alternative B  
Back-In Angle Parking**



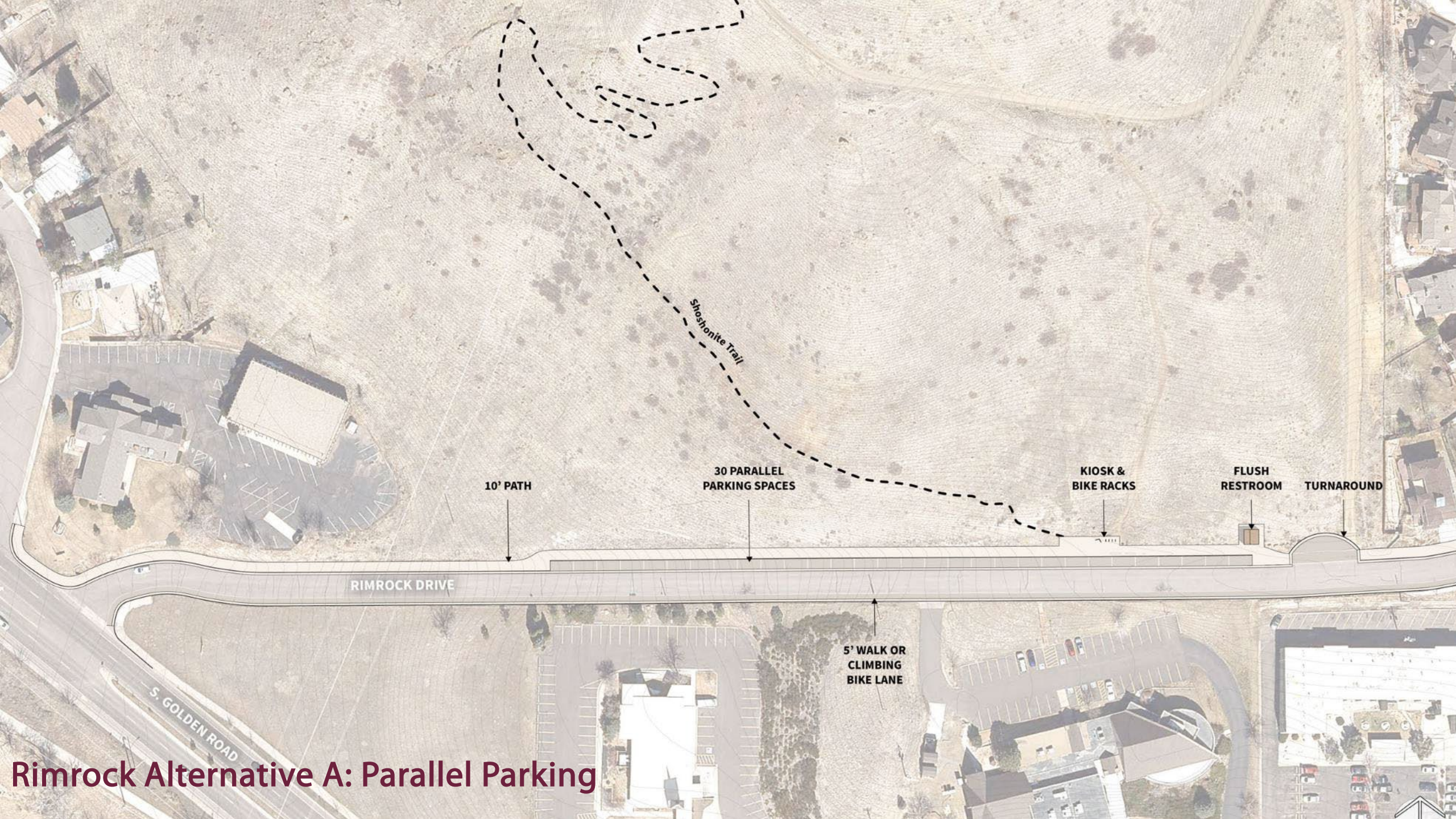
An aerial photograph of a suburban area with a semi-transparent title overlay. The background shows a mix of residential housing, including single-family homes and larger apartment-style buildings, interspersed with green spaces and trees. A major road with a roundabout is visible in the lower-left quadrant. The title text is centered and reads: 

# **Interactive Alternative Questions – Golden Hills**

# RIMROCK ALTERNATIVES

Kristina Duff – Jefferson County Open Space

Joe Puhr – City of Golden



Shoshonite Trail

10' PATH

30 PARALLEL  
PARKING SPACES

KIOSK &  
BIKE RACKS

FLUSH  
RESTROOM

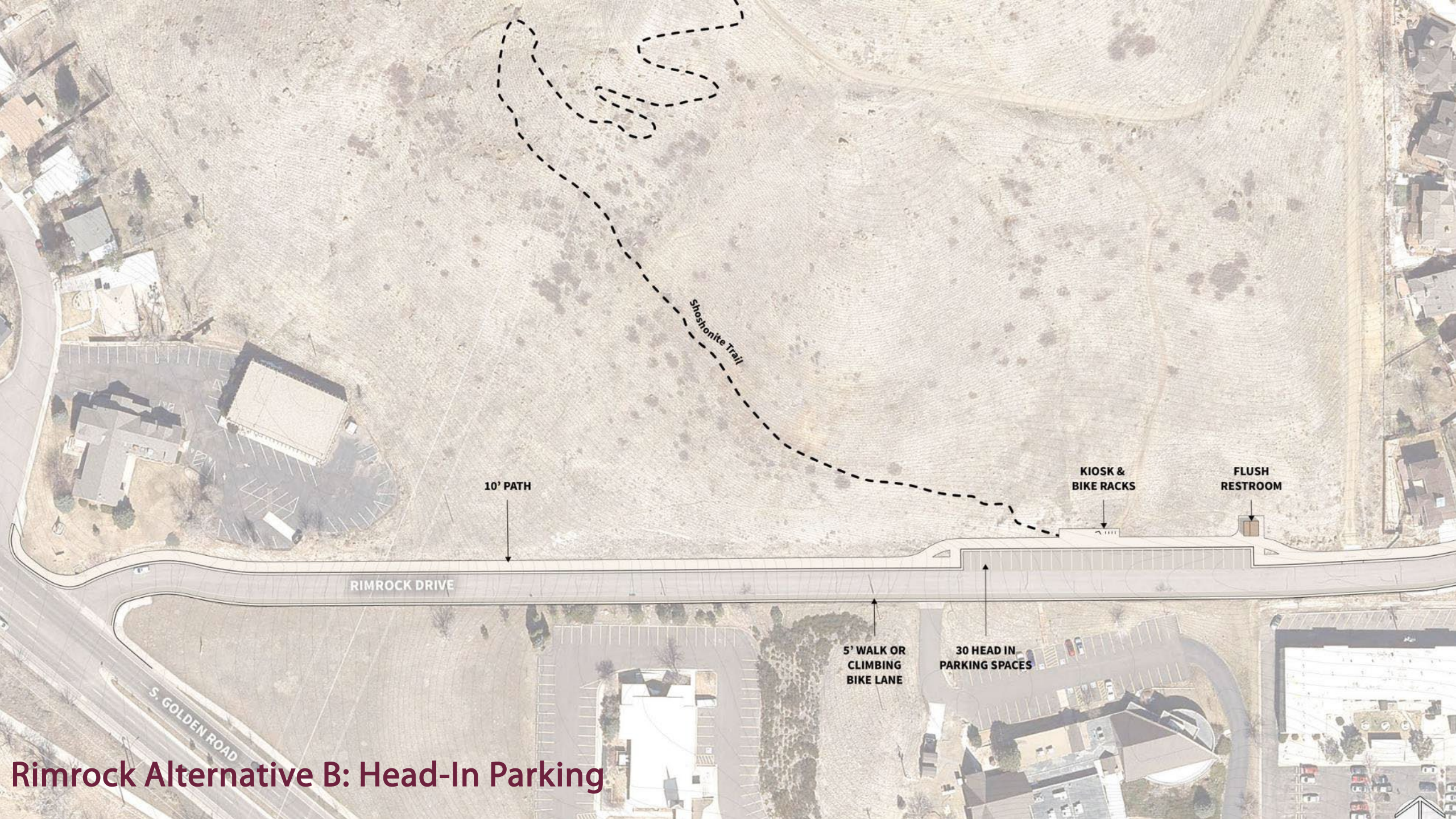
TURNAROUND

RIMROCK DRIVE

5' WALK OR  
CLIMBING  
BIKE LANE

S. GOLDEN ROAD

Rimrock Alternative A: Parallel Parking



Shoshonite Trail

10' PATH

RIMROCK DRIVE

5' WALK OR  
CLIMBING  
BIKE LANE

30 HEAD IN  
PARKING SPACES

KIOSK &  
BIKE RACKS

FLUSH  
RESTROOM

S. GOLDEN ROAD

Rimrock Alternative B: Head-In Parking



Shoshonite Trail

10' PATH

RIMROCK DRIVE

KIOSK &  
BIKE RACKS

FLUSH  
RESTROOM

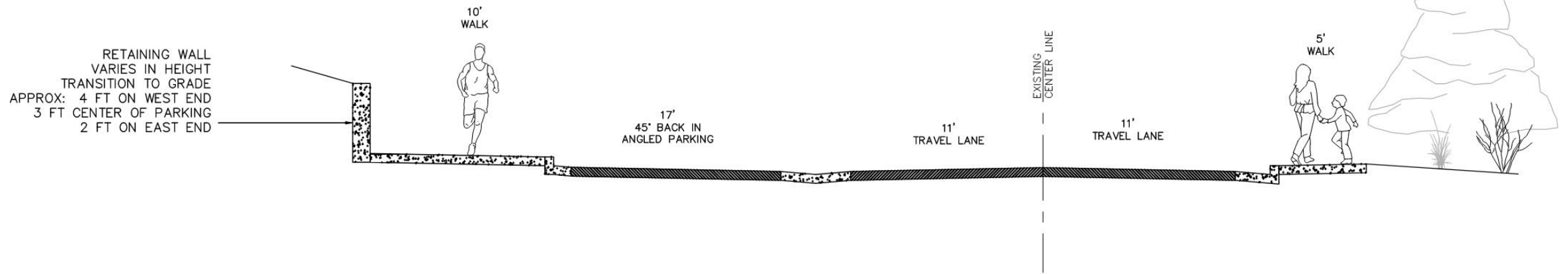
TURNAROUND

5' WALK OR  
CLIMBING  
BIKE LANE

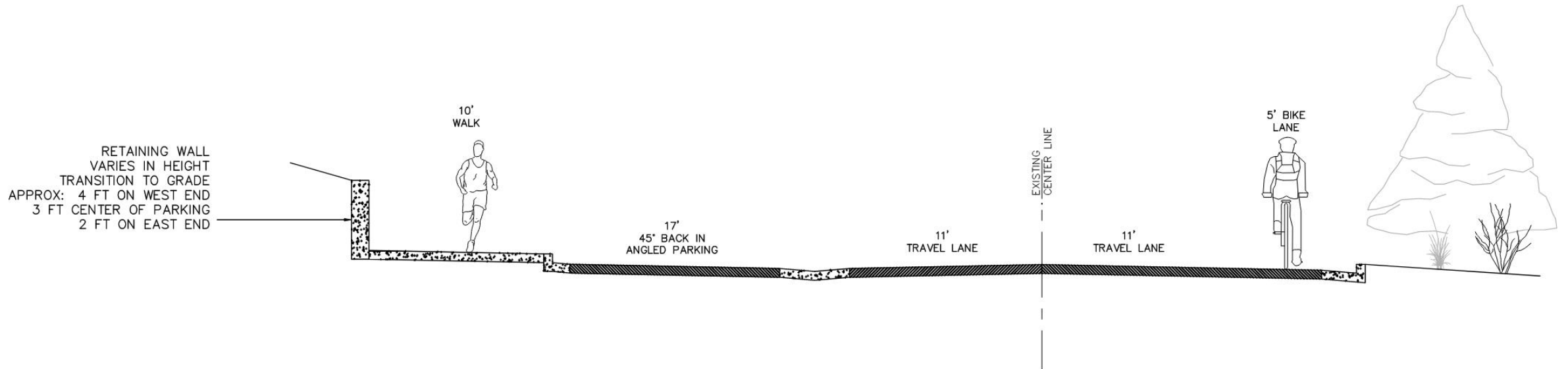
30 BACK-IN  
PARKING SPACES

S. GOLDEN ROAD

Rimrock Alternative C: Back-In Angle Parking



## Rimrock Section: 5' Sidewalk on South Side



## Rimrock Section: 5' Climbing Bike Lane on South Side



# **Interactive Alternative Questions – Rimrock**

## CLOSING / NEXT STEPS

Tom Hoby – Jefferson County Open Space

Dan Hartman – City of Golden

# Next Steps

- Meeting materials and the poll will be posted to [GuidingGolden.com](https://GuidingGolden.com). The Mentimeter poll will remain open until July 2<sup>nd</sup>.
- We will use input to guide our next steps in design.
- Visit [GuidingGolden.com](https://GuidingGolden.com) to learn more about project updates.
- Separate meetings to address other neighborhood parking issues.



Photo Courtesy of JCOS

# Thank You



**JEFFERSON**  
COUNTY COLORADO  
Open Space



City of  
Golden