

**CITY OF GOLDEN
PARKS & RECREATION ADVISORY BOARD
****REGULAR MEETING****
TUESDAY, APRIL 17, 2012 - 7:00 P.M.**

GOLDEN COMMUNITY CENTER

- 1. Roll Call**
- 2. Approval of the Agenda**
- 3. Approval of March 20, 2012 Minutes**
- 4. Public Comment**
- 5. South Side Clear Creek Trail Update**
- 6. Vanover Park Concept Review**
- 7. Capital Improvement Priorities**
- 8. Trail Mile Markers**
- 9. Director's Report**
- 10. Board Members' Comments**
- 11. Adjourn**

City of Golden

Memorandum



To: City Council, Parks and Recreation Advisory Board
Thru: Michael C. Bestor, City Manager
From: Steve Glueck, Director of Planning and Development
Date: April 13, 2012
Re: Status Update for South Side Trail

A handwritten signature in black ink, appearing to be 'S. Glueck', is written over the 'From:' line of the memorandum.

The Parks and Recreation Advisory Board has invited Golden resident Edgar Ethington, who works for the Colorado Department of Health and Environment (CDPHE) to attend the April 17, 2012 advisory board meeting. Accordingly, it is a good time for a general update on the project. The bottom line is that the two remaining steps necessary for the trail construction are execution of the easement with CSM, and a release of the property for this purpose by CDPHE. Both steps are in process. It is staff's understanding that all parties remain optimistic that a resolution in time for construction before some of the grant funding expires is possible, but not assured.

Recent Background: As both Council and the Parks Board are generally aware of the project this update only covers the past couple years:

- The portion of the trail along US 6 and Chimney Gulch and the bridge over Clear Creek were completed in 2010. The remaining section could not be constructed at that time due to environmental limitations.
- During 2010 and 2011, monitoring wells on the CSMRI site (northwest of Brooks Field) yielded test results that resulted in the excavation of a certain amount of contaminated soil, which was stockpiled for characterization. All of this material was removed from the site in late 2011.
- In December 2011, CSM staff received the attached letter from Mr. Ethington which summarized the general status at that time. In essence, the letter indicates a finding by CDPHE that the proposed trail use on the "upper terrace" would be appropriate. However, this letter did not authorize construction of the project.
- Concurrently with actions taken to address the physical conditions of the site in recent years, CDPHE and Mines have been attempting to work through certain administrative and licensing issues for the site area.
- While Mr. Ethington or Mines representatives would be better able to describe the anticipated resolution, staff's understanding is that the general direction is to remove the "upper terrace" where the trail is proposed from the CDPHE license agreement, which must remain in place for the lower terrace and creekside areas until future release based upon the results of the monitoring wells.

- The easement from Mines to allow the trail construction was drafted in preliminary form several months ago, and is currently near final form, as well as the preparation of an environmental covenant the City is requested to execute for the portion of the lower terrace owned by the City.
- At this point, staff is advised by both CDPHE and Mines that they are trying to achieve a resolution that allows the trail construction this spring and summer. However, there is no guaranty.
- Staff remains ready to proceed quickly with the project if authorized.

Funding Background: Funding for the project includes two grants and funds identified in the Sales and Use Tax Fund:

- Over ten years ago, staff applied for and received approval for a grant from the state Energy Impact Assistance Fund, established to assist communities with impacts from mining activities. The clean-up of the Colorado School of Mines Research Institute (CSMRI) qualified as a project associated with prior mining research that resulted in significant contamination that is only now nearing adequate clean-up. This \$150,000 grant expired once, was reapplied for and approved again, and has been extended twice, with a current expiration date of July 31, 2012. This grant from a third state agency has led to positive action by the other two state agencies (CDPHE and CSM) to reach resolution, however, to date we are not quite there.
- Funds for the 2010 bridge installation and small section of creekside trail were a combination of City funds and part of a Jefferson County Open Space Joint Venture grant. An unspent portion of this grant is also available for this final segment.
- The final funding element of the project appears in the Sales and Use Tax fund, labeled "US 6 Bikepath", as it is a final phase of that project as well.

Summary: Staff appreciates the efforts and commitment from all three state agencies to help us achieve this important community facility. Our intention is to continue to work cooperatively with CDPHE and Mines in hopes of getting the trail complete by the end of July.

Attachment: December 15, 2012 CDPHE letter

STATE OF COLORADO

John W. Hickenlooper, Governor
Christopher E. Urbina, MD, MPH
Executive Director and Chief Medical Officer

Dedicated to protecting and improving the health and environment of the people of Colorado

4300 Cherry Creek Dr. S. Laboratory Services Division
Denver, Colorado 80246-1530 8100 Lowry Blvd.
Phone (303) 692-2000 Denver, Colorado 80230-6928
Located in Glendale, Colorado (303) 692-3090
<http://www.cdphe.state.co.us>



Colorado Department
of Public Health
and Environment

December 15, 2011

Linn Havelick
Colorado School of Mines
Environmental Health and Safety
Golden, Colorado 80401-1887

RE: Colorado School of Mines Research Institute – Creekside Facility
Radioactive Materials License Number 617-01

Dear Mr. Havelick:

A report entitled Site Environmental Conditions dated November 2011 was received by the Colorado Department of Public Health and Environment (the Department) on November 10, 2011. The report has been reviewed.

The above-cited report is a good summary of events at the Creekside Facility but is not a regulatory document under the radioactive materials license. It is the characterization reports, decommissioning plans, implementation reports, monitoring reports, and disposal reports that have been submitted over the past years that impact the regulatory decision.

The remaining issues are: 1) elevated heavy metals in soils; and 2) elevated uranium concentrations in ground water.

Based on the scenario of recreational and grounds keeping use, site soils have been adequately remediated for heavy metal content. If a different land use scenario is proposed, then its appropriateness will be judged by the Department on potential risk. It is for the licensee to propose and demonstrate appropriate land use.

Ground water at the site remains in violation of Colorado Ground Water Standards for uranium. Remedial actions performed in 2010 with the intent of reducing long-term uranium concentrations in ground water are still being evaluated through monitoring. The Department shall determine if additional remedial actions, including soil excavation, are necessary based on ground water monitoring data. The decision will be based on two years (eight quarters) of sampling beginning in the first quarter 2011.

However, that leaves many site areas open to change of status under the license renewal process.

1. The Clay Pits have been adequately characterized and no additional actions are required.
2. The land under the soccer field is adequately characterized and no additional actions are required.
3. Upper terrace soils have been adequately characterized and no additional actions are required except those that may be necessary to bring ground water into compliance or to change land use.
4. Lower terrace soils have been adequately characterized and no additional actions are required except those that may be necessary to bring ground water into compliance or to change land use.
5. Fencing can be removed except where necessary for site safety and protection.

A long-term institutional control, such as an environmental covenant, may substitute for a radioactive materials license at this site.

The area north of and under the softball field is not part of the licensed portion of the facility. It is not part of any regulatory or environmental decision made under the Radioactive Materials license.

If you have any questions or would like to set up a meeting, please call me at (303) 692-3438.

Sincerely,



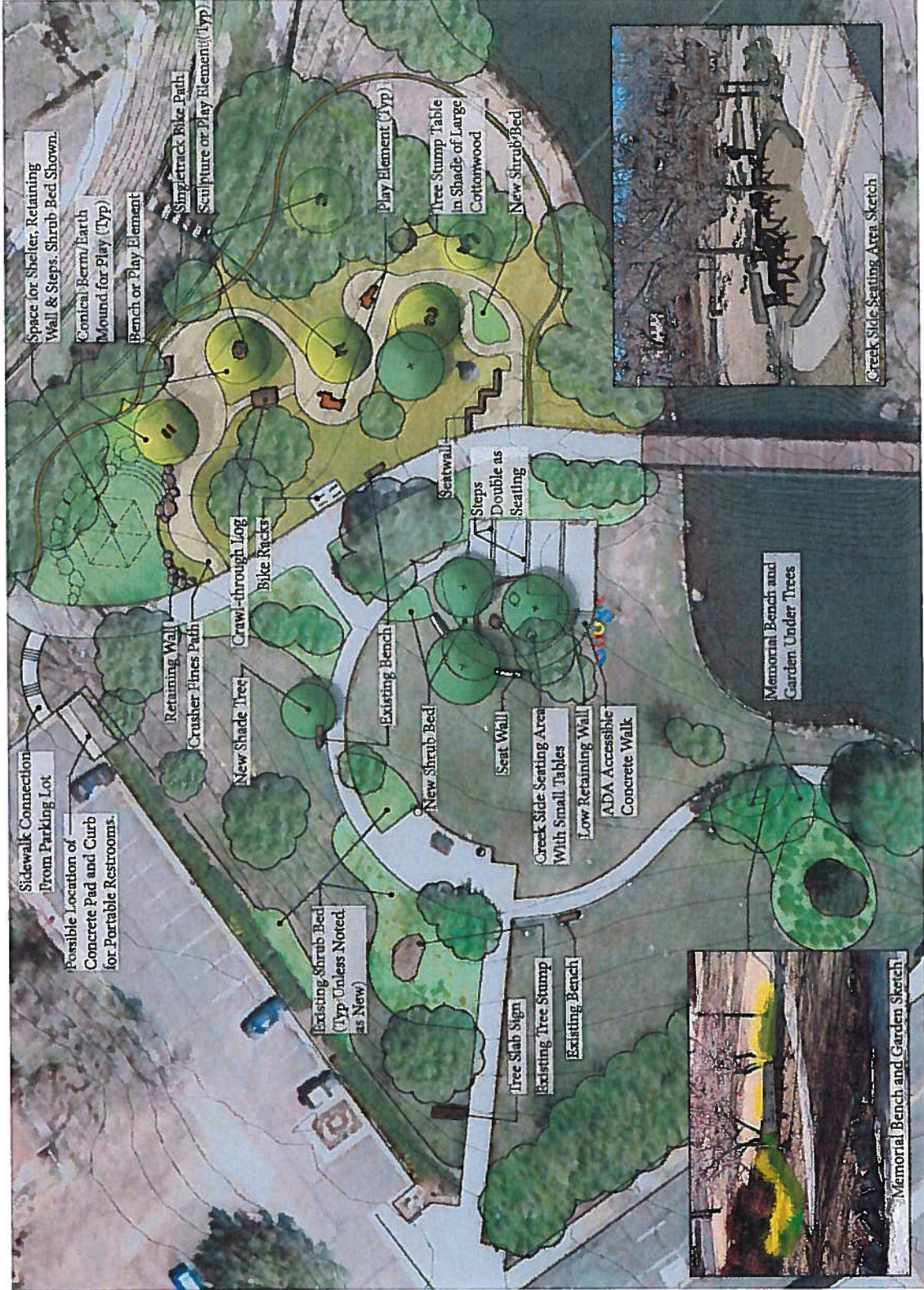
Edgar Ethington
Radiation Management Unit
Compliance Program

CC File 617-01; 3.2

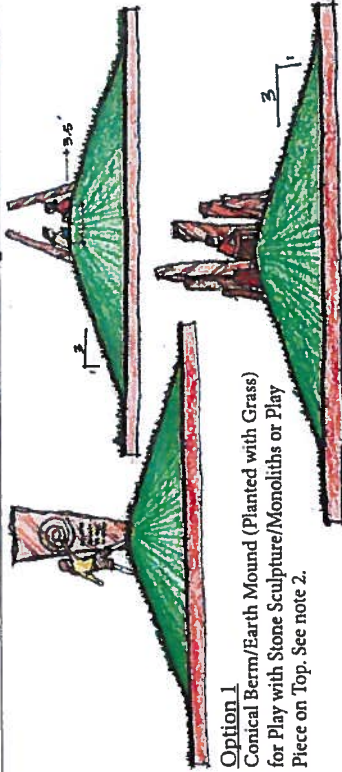
DRAFT
Concept AB
 Earth Mound Playground/
 Creekside Seating Area

Vanover Park
 Golden, CO

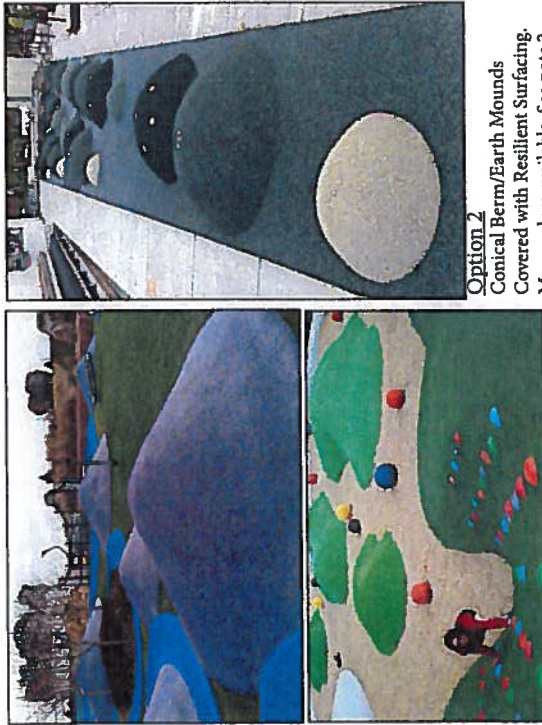
April 11, 2012
 WINSTON
 STRONG
 ARCHITECTS
 SCALE: 1" = 30'-0"
 NORTH



Earth Mound Treatment Options



Option 1
Conical Berm/Earth Mound (Planted with Grass)
for Play with Stone Sculpture/Monoliths or Play
Piece on Top. See note 2.



Option 2
Conical Berm/Earth Mounds
Covered with Resilient Surfacing.
Many colors available. See note 2.

Notes:

1. Depending on fall height, it may be necessary to provide safety surfacing below play/sculptural elements.
2. The surface of the conical mounds (grass or resilient surfacing) may depend on maintenance requirements.
3. All play pieces shown are included as examples. Other equipment may be selected depending on preferences. The number and types of pieces included is flexible.

Play Element Examples



Acorn



Turtle and Frogs



Snake



Crawl-Through Log



Swimming Trout



Log Slide



Toad Stool Climber



Musical Play Piece Examples (Freenotesharmonyplay.com)



Digging Area



Tree Stump Jump



Tree Stump Table



Outdoor Classroom/Rocky Terrain

DRAFT
Concept AB
Earth Mound Playground/
Creekside Seating Area

Vanover Park
Golden, CO





CHRY 1.1
 CHRY 1.2
 CHRY 1.3
 CHRY 1.4
 CHRY 1.5
 CHRY 1.6
 CHRY 1.7
 CHRY 1.8
 CHRY 1.9
 CHRY 1.10
 CHRY 1.11
 CHRY 1.12
 CHRY 1.13
 CHRY 1.14
 CHRY 1.15
 CHRY 1.16
 CHRY 1.17
 CHRY 1.18
 CHRY 1.19
 CHRY 1.20
 CHRY 1.21
 CHRY 1.22
 CHRY 1.23
 CHRY 1.24
 CHRY 1.25
 CHRY 1.26
 CHRY 1.27
 CHRY 1.28
 CHRY 1.29
 CHRY 1.30
 CHRY 1.31
 CHRY 1.32
 CHRY 1.33
 CHRY 1.34
 CHRY 1.35
 CHRY 1.36
 CHRY 1.37
 CHRY 1.38
 CHRY 1.39
 CHRY 1.40
 CHRY 1.41
 CHRY 1.42
 CHRY 1.43
 CHRY 1.44
 CHRY 1.45
 CHRY 1.46
 CHRY 1.47
 CHRY 1.48
 CHRY 1.49
 CHRY 1.50
 CHRY 1.51
 CHRY 1.52
 CHRY 1.53
 CHRY 1.54
 CHRY 1.55
 CHRY 1.56
 CHRY 1.57
 CHRY 1.58
 CHRY 1.59
 CHRY 1.60
 CHRY 1.61
 CHRY 1.62
 CHRY 1.63
 CHRY 1.64
 CHRY 1.65
 CHRY 1.66
 CHRY 1.67
 CHRY 1.68
 CHRY 1.69
 CHRY 1.70
 CHRY 1.71
 CHRY 1.72
 CHRY 1.73
 CHRY 1.74
 CHRY 1.75
 CHRY 1.76
 CHRY 1.77
 CHRY 1.78
 CHRY 1.79
 CHRY 1.80
 CHRY 1.81
 CHRY 1.82
 CHRY 1.83
 CHRY 1.84
 CHRY 1.85
 CHRY 1.86
 CHRY 1.87
 CHRY 1.88
 CHRY 1.89
 CHRY 1.90
 CHRY 1.91
 CHRY 1.92
 CHRY 1.93
 CHRY 1.94
 CHRY 1.95
 CHRY 1.96
 CHRY 1.97
 CHRY 1.98
 CHRY 1.99
 CHRY 1.100